

# RANGE 5

## SOP

### RANGE DESCRIPTION

- Range 5 is an active small arms range supporting live fire and movement or static direct fire from ground positions located at Grid 18STH8150065400.
- Primarily accessed from Cannon Trail, Range 5 can be reached via Rd 644 from MCB-3 if not closed by an SDZ.
- Range 5 is secured by gates that will be kept closed/locked or closed/manned at all times.
- Access through the Range 5 Perimeter gate from Garrisonville Rd. (Rt 610) requires prior authorization from Range Control.
- Principal direction of fire is between (L) 350.71° to (R) 1.59° Grid. Figure-1.
- There are 45 stationary infantry targets (SITS) and 3 mobile infantry targets (MITS) Figure-2.
- The movement box is 155m wide by 125m deep with approximately 12 firing lanes for live fire and movement (figure-3 and 4) and up to 25 firing points for static fire. Figure-9.
- Paper, plastic, or wood framed targets may be used for static engagements or to augment SITS/MITS.
- Steel Reactive Targets (SRT) are authorized in accordance with paragraph (E) and Figure-5.
- Trackless Mobile Infantry Targets (TMITs) are authorized on this range and must be engaged according to paragraphs (E) and (F) and Figure-5 and Figure-6. Crossfire is not authorized.
- All additional targets including TMITs must be placed minimum 20' from any SIT/MIT target bunker. Figure 5.
- Live fire from the tower is prohibited.

**Primary Use:** Squad sized units conducting live fire and movement without support by fire.

### **Alternate Uses:**

- Multi-purpose small arms range for Squad sized elements firing in the defense.
- Short to mid-range small arms zeroing and live fire training to 400m.

### **NOTES:**

- This range is certified for 7.62mm and below and other limited weapons/ordnance. See paragraphs (A) and (B) below. See RFMSS for a complete list of associated weapons/ordnance.
- OIC/RSO will need the key to the Range 5 gate to access this range.
- If authorized, the OIC/RSO will need the key to the Range 5 Perimeter gate to access the range from Garrisonville Rd (Rt 610).
- OIC/RSO will ensure the gates are **Closed and Locked or Closed and Manned** when live fire is in progress.
- The Tower is for observation only. Roof is limited to **5 personnel** at any time not to exceed **1,000lbs.**
- Use of the Trackless Mobile Infantry Targets (TMITS) is authorized on this range with restrictions. See Paragraphs (E) and (F), Figure-6, and Figure-7.
- Access to the tower does not require additional approval, OIC/RSO need to request the keys at checkout.
- Storage in the tower is for unit use and limited to the length of the event. Unit must ensure it is clean and policed prior to the post inspection.

**Conflicts:** Details found in Figure-10, paragraph (G.2) below, and RFMSS. Based on DODIC fired:

- Range 5 conflicts with access to Range 5, Range 6, and Range 7 from MCB-3 via Dirt 7 and Rd 644.
- Range 5 conflicts with MCB-3, Rd 644, and Dirt 7.
- Range 5 conflicts with TA-07A, TA-09A, TA-09C, TA-09D, TA-10A, and TA-10C.
- Check the Range Facility Management Support System (RFMSS) for applicability.



Figure-1

**A. WEAPONS ACCOMMODATED:** Detailed list is maintained in RFMSS.

- Service Rifles, Shotguns, and Pistols.
- Sniper Rifles.
- Foreign Weapons.
- Hand-held Grenade launchers.
- Light and medium machine guns.
- Non-Lethal Weapons.
- AT-4, SMAW, MAAWS, LAAW (practice/trainer only).

**B. AMMUNITION AUTHORIZED:** Detailed list is maintained in RFMSS.

- Shotgun (All).
- Pistol (All).
- 5.56mm (All).
- 7.62mm (All).
- Hand Grenades and 40mm Grenades (Practice/smoke/Illum/Non-Lethal only).
- Pyro and illum are authorized when Fire Danger Conditions allow.
- Rockets: Limited to practice, spotting rounds, and sub-cal trainers. Check RFMSS for DODICs.



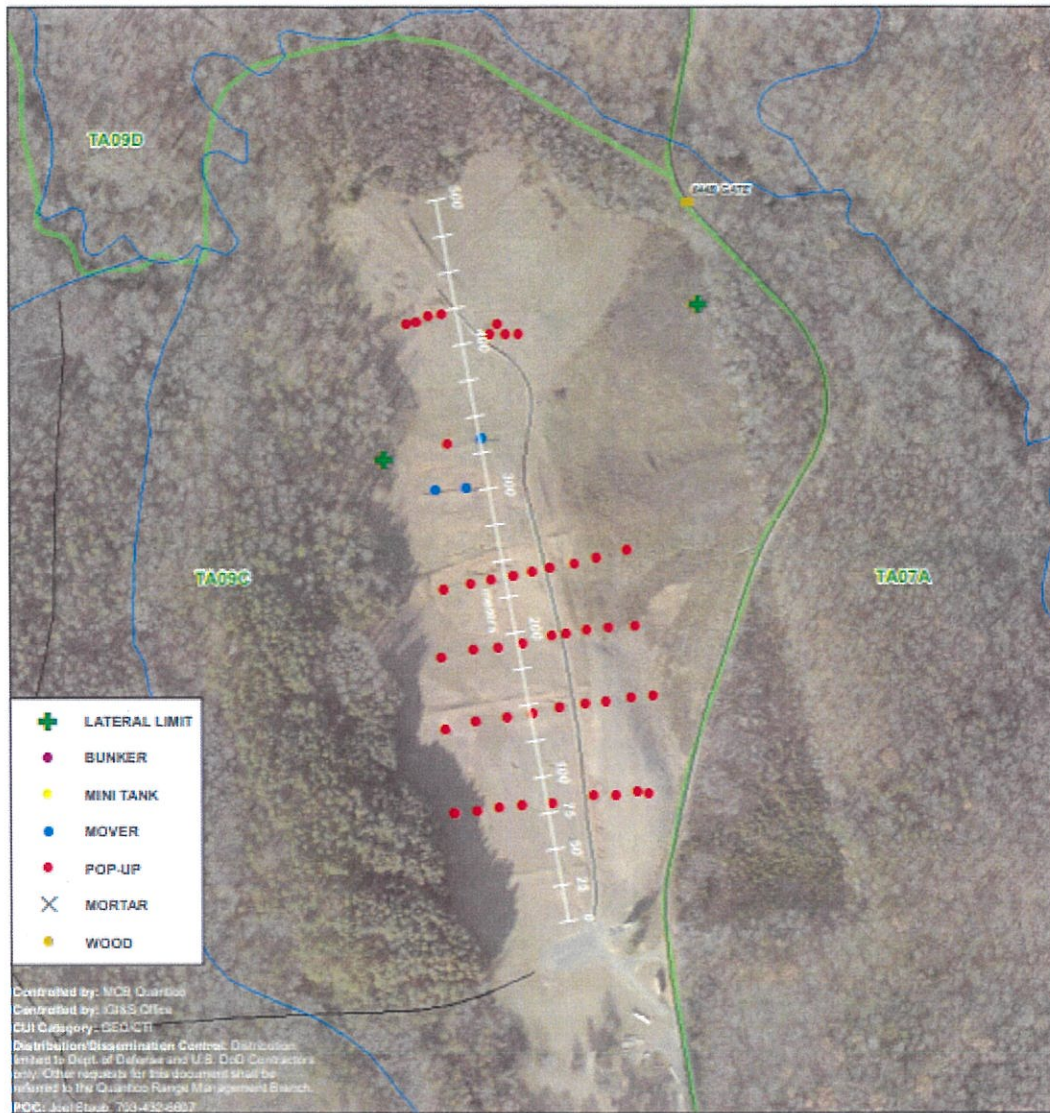


Figure-2

**C. LASERS AUTHORIZED:** Class 1 – 3R. Standard aiming devices mounted on approved service rifles. Class 3B can be fired if safety filter is on, reducing power output.

#### **D. TARGETS/SIMULATORS/DEVICES.**

1. 45 Stationary Infantry Target Systems (SITS) with SACON protective walls.
2. 3 Moving Infantry Target Systems (MITS) with SACON protective walls.
3. Portable Infantry Targets (PITS), Trackless Mobile Infantry Targets (TMITs), Steel Reactive Targets (SRTs), Training IED's, simulators, etc. are authorized for this range.
4. All targets and systems above must be coordinated through the Training Systems Support Desk (TSSD).
5. Additional targets are limited to paper, plastic, wood framed, and approved SRT and must be placed a minimum of 20' from any SIT, MIT, or the protective concrete bunkers. Figure 4.
6. Pallets and tires are not authorized targets or target reference points.
7. OIC/RSO must ensure all targets are placed and engaged from positions, so the gun-target lines and all rounds fired do not exceed the left and right lateral limits.
8. Placement and use of SRTs must comply with SOUM 15-23 or MCO 3570.1D/DAPAM 385-63 when it is released and this SOUM rescinded. Paragraph (E) contains details on minimum engagement distances.



9. Enhanced Performance Round (EPR) ammunition (M855A1/M80A1) is NOT authorized to be fired on SRTs, steel protective plates for Portable Infantry Targets (PITS), or TMITs.
10. Target support must be requested and approved in RFMSS under the TSSD Support Fire Desk. Contact Training Support Center (TSC) at (703)432-7026/7969 for target support or questions.

**E. Minimum engagement distances for SRT and TMITs: .300/.338/.50cal Ammunitions not authorized on R-5.**

-Pistol:	7 meters
-Shotgun (bird/buck):	10 meters
-Shotgun (slug):	45 meters
-5.56mm (soft-core):	23 meters
-5.56mm (steel penetrator):	69 meters
-5.45mm:	69 meters
-7.62mm Ball/linked:	150 meters
-7.62mm Special Ball:	150 meters
-7.62x39mm/7.62x54mm:	150 meters
-6.5mm Creedmoor	375 meters
-6.8mm	NOT AUTHORIZED ON SRT

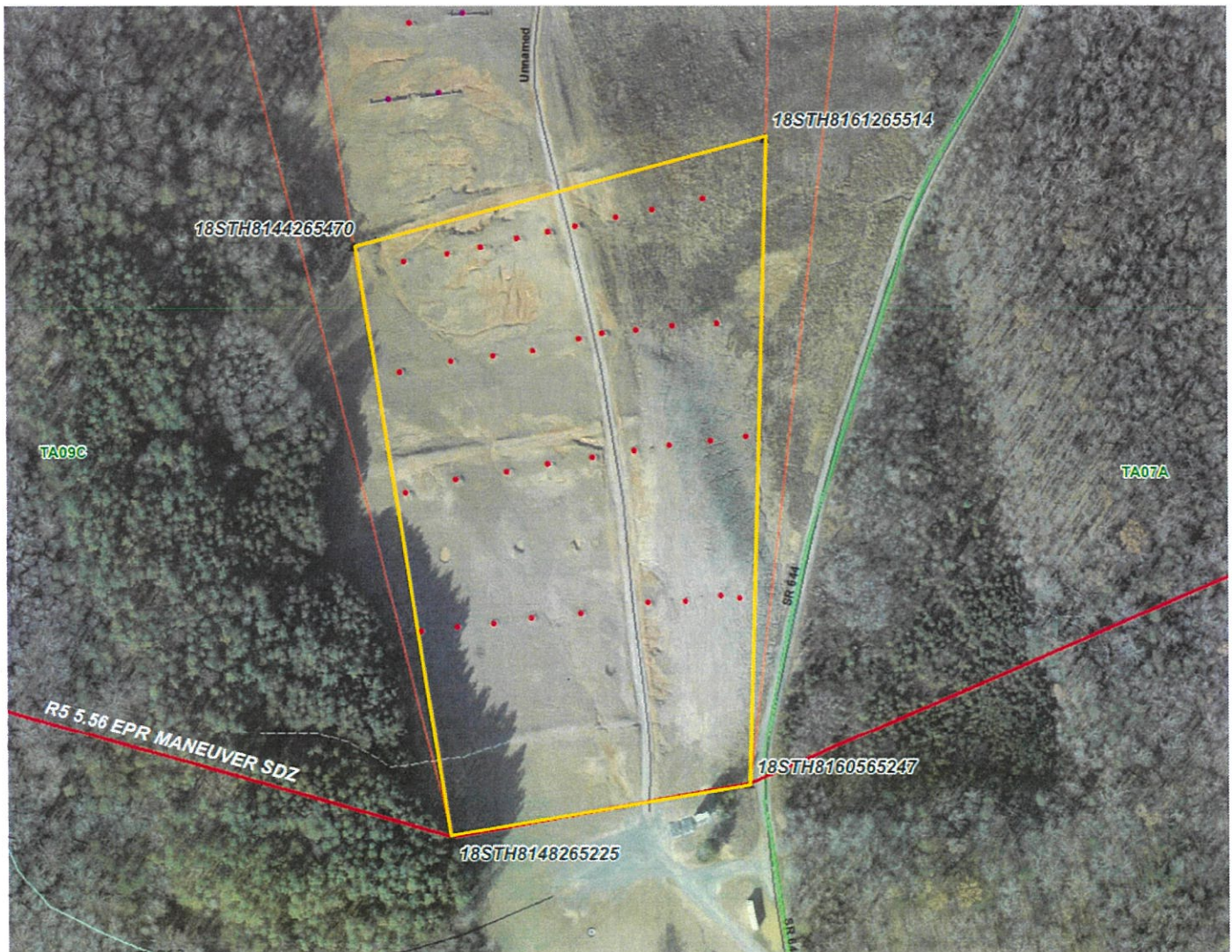


Figure-3





#### MOVEMENT BOX DETAILS

- A: THE DISTINCTION BETWEEN THE LEFT/RIGHT SIDES OF THE RANGE ARE MADE UTILIZING THE ROAD IN THE CENTER OF THE RANGE.
- B: THERE ARE NO DESIGNATED LANES, UNITS ARE ABLE TO DESIGNATE THEIR OWN CONSIDERATIONS FOR LANES.
- C: FIRING ACROSS THE FRONT OF MOVING TROOPS IS PROHIBITED.
- D: ALL SHOOTERS MUST ENGAGE TARGETS TO THEIR DIRECT FRONT ONLY ON THE PDF INDICATED IN FIGURE-1.
- E: ON THE LEFT SIDE OF THE RANGE PRIOR TO THE LIMIT OF ADVANCE ARE 4 ROWS OF 5 TARGET POSITIONS.
- F: ON THE RIGHT SIDE OF THE RANGE PRIOR TO THE LIMIT OF ADVANCE ARE 4 ROWS OF 4 TARGET POSITIONS.
- G: RIGHTMOST TARGETS OF EACH ROW ARE PULLED INTO THE "MACHINE GUN BUNKER PIT POSITION" MAKING 4 ROWS OF 3 TARGETS.
- H: THE COUNTERATTACK IS SEPARATED INTO A SECTION OF THE 3 MITS AND 1 SIT INCLUDING THE FINAL COUNTERATTACK TARGET POSITIONS, WITH 4 TARGETS EACH SIDE OF THE ROAD IN THE FAR BACK OF THE RANGE.
- I: THE ENEMY COUNTERATTACK IS ENGAGED FROM THE LIMIT OF ADVANCE AGAINST THE SITS, MITS, AND/OR TMITS.
- J: CROSSFIRE ON ANY TARGETS IS PROHIBITED.

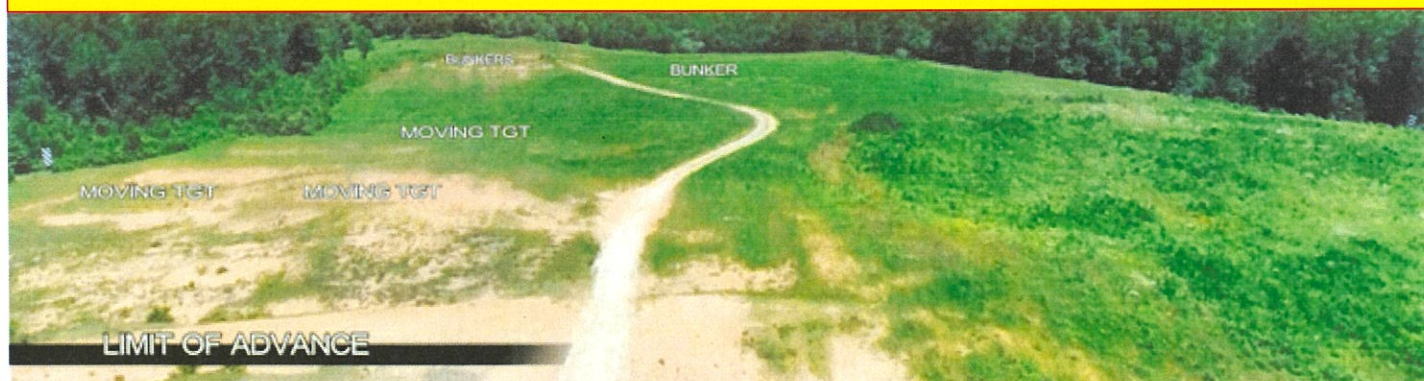


Figure-4





Figure-5

#### **F. TRACKLESS MOBILE INFANTRY TARGETS (TMITs):**

-TMITs are approved for this range and must be used in accordance with the following instructions and Figure-6 and Figure-7.

-Crossfire is not authorized.

-Personnel moving down range must engage TMITS and all targets to their direct front only. OIC/RSO must include this in the detailed safety brief.

##### **1. Op-Box-1 "TMIT Maneuver":** L/R Lateral Limits are the width of the movement box as shown in Figure 6.

- TMITs must be engaged to the direct front of any personnel in the movement elements.

-Crossfire is not authorized in this Op-Box or on this range.

-TMITs are authorized to execute any scenario the terrain allows within this Op-Box.

-TMITs must maintain the minimum safe engagement distances from the advancing troops as noted in paragraph (E).

##### **2. Op-Box-2 Counter Attack:**

-TMITs may be engaged in this box from any point along the Limit of Advance shown in Figure-7.

-TMITs are authorized to execute any scenario the terrain allows within this Op-Box.

-TMITs must remain inside this Op-Box when being engaged.

-TMITs must be engaged to the direct front of any personnel in the movement elements.

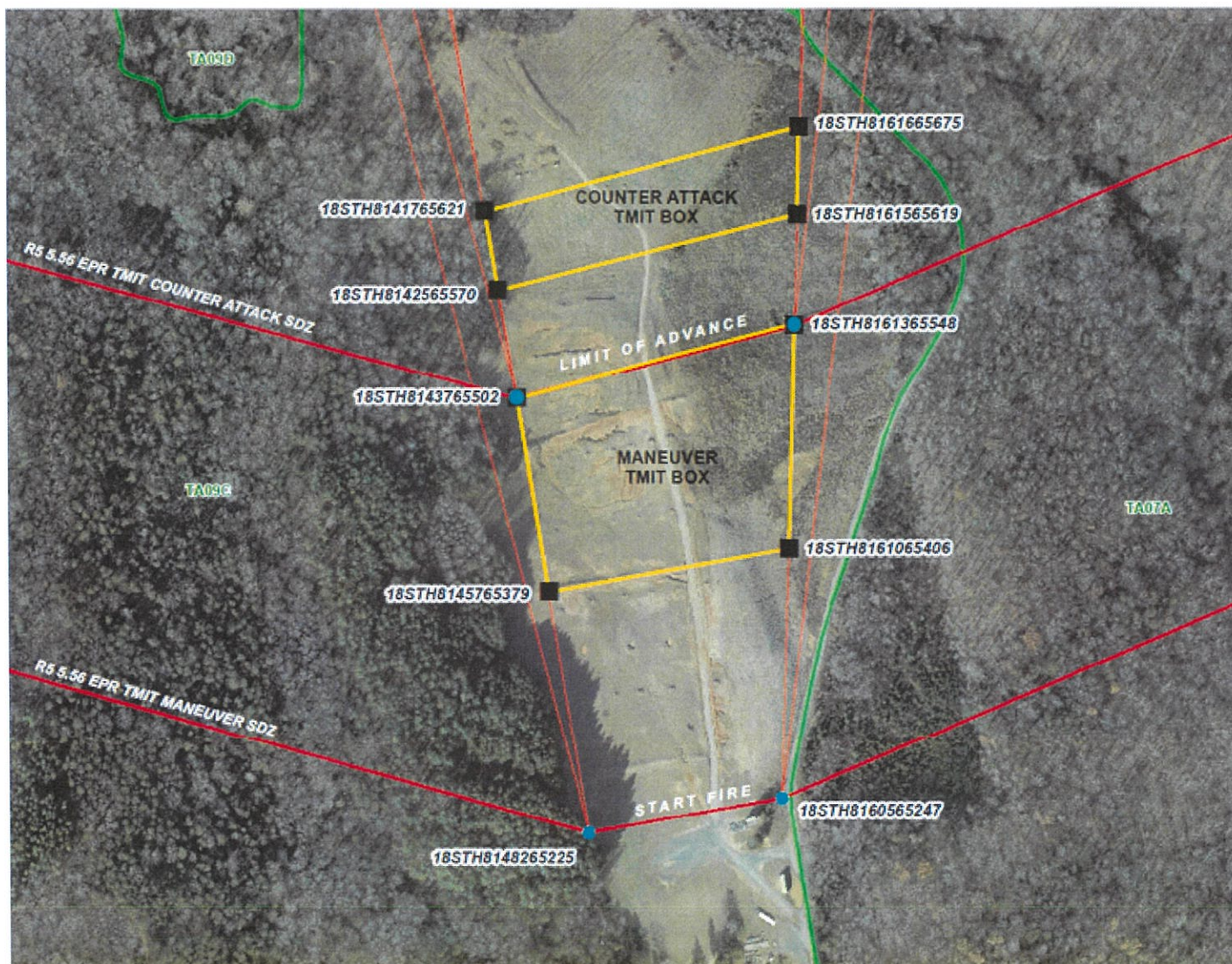
-Crossfire is not authorized in this Op-Box.

##### **3. Minimum Engagement Distances (Stand Off) for TMITs:**

-Use the minimum engagement distances in paragraph (E) above.

-These distances also apply laterally to the TMITs, and caution must be exercised when personnel on this range or adjacent areas are in proximity.



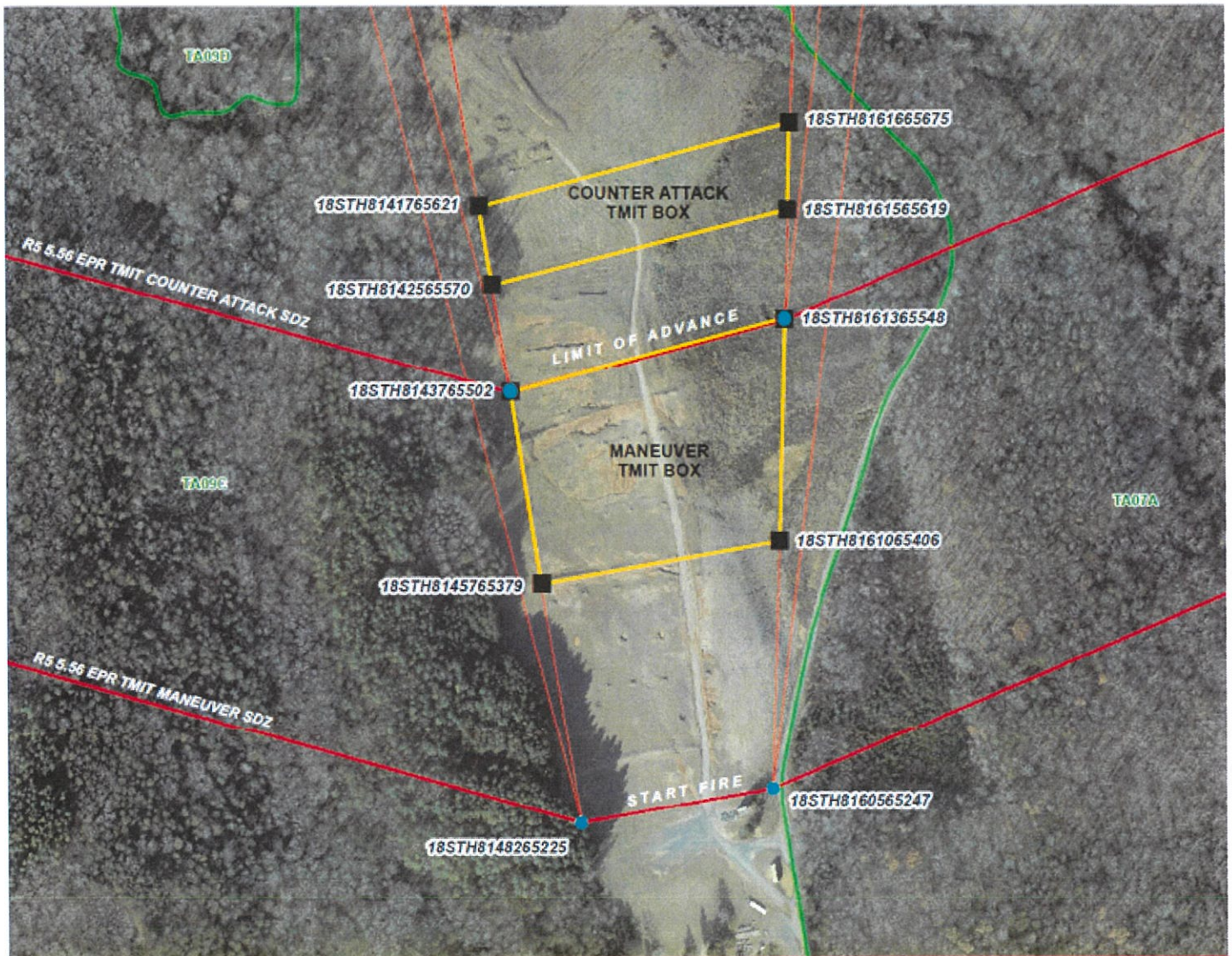


#### TMIT OP-BOX-1 "TMIT MANEUVER"

- A: OIC/RSO MUST BRIEF: MOVEMENT ELEMENTS WILL ONLY ENGAGE TMITS TO THEIR DIRECT FRONT OF MOVEMENT DOWN RANGE.
- B: OIC/RSO MUST BRIEF: MOVEMENT ELEMENTS MUST NOT EXCEED THEIR ASSIGNED SECTOR OF FIRE.
- C: OIC/RSO MUST BRIEF: MINIMUM SAFE ENGAGEMENT DISTANCE ON TMITS BASED ON CALIBER IAW PARAGRAPH (E).
- D: OIC/RSO MUST BRIEF: CROSSFIRE IN THIS OP-BOX IS STRICTLY PROHIBITED.
- E: TMITS MAY BE ENGAGED STARTING FROM THE START FIRE LINE INDICATED ABOVE.
- F: LIMIT OF ADVANCE ON TMITS IS THE LIMIT OF ADVANCE LINE INDICATED ABOVE.
- G: TMITS ARE AUTHORIZED TO "MANEUVER" IN ANY SCENARIO THE TERRAIN ALLOWS INSIDE THIS OP-BOX.
- H: TMITS MUST EGRESS DOWN RANGE AS MOVEMENT ELEMENTS ADVANCE TO MAINTAIN THE MINIMUM SAFE ENGAGEMENT DISTANCE.
- I: NEUTRALIZED TMITS MUST EXIT OP-BOX IN THE MOST DIRECT/SAFE ROUTE POSSIBLE TO MITIGATE SECONDARY RICOCHET HAZARDS.
- J: USE OF 7.62MM AND ABOVE IS NOT AUTHORIZED AGAINST TMITS IN THIS OP-BOX.
- K: USE OF PISTOL AND SHOTGUN CALIBERS IS AUTHORIZED IN THIS OP-BOX BUT MUST BE ENGAGED TO DIRECT FRONT.

Figure-6



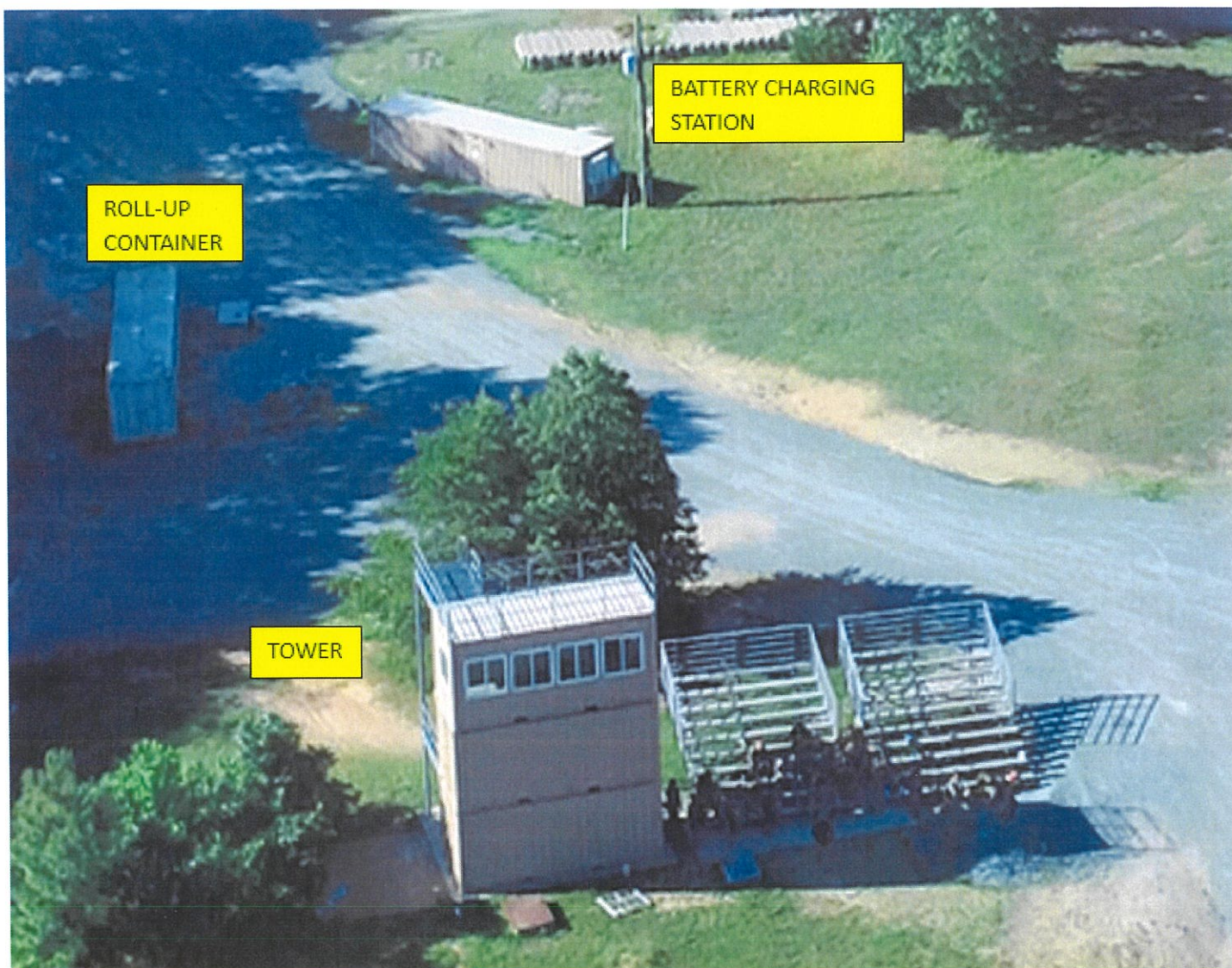


#### TMIT OP-BOX-2 COUNTERATTACK

- A: OIC/RSO MUST BRIEF: CROSSFIRE IS NOT AUTHORIZED. PERSONNEL MUST ENGAGE THE TMITS TO THEIR DIRECT FRONT ONLY.
- B: TMITS MAY BE ENGAGED FROM ANYWHERE ALONG THE LIMIT OF ADVANCE INDICATED ABOVE.
- C: TMITS ARE AUTHORIZED TO MOVE IN ANY SCENARIO THE TERRAIN ALLOWS INSIDE THIS OP-BOX.
- D: 5.56MM IS THE ONLY CALIBER AUTHORIZED IN THIS OP-BOX.
- E: USE OF 7.62MM AND ABOVE IS NOT AUTHORIZED IN THIS OP-BOX DUE TO SDZ CONSTRAINTS.
- F: USE OF PISTOL AND SHOTGUN CALIBERS IS NOT AUTHORIZED IN THIS OP-BOX DUE TO DISTANCE AND ANGLE OF FIRE CONFLICTS.

Figure-7





OBSERVATION TOWER, ROLL-UP STORAGE CONTAINER, BATTERY CHARGING STATION

- A: LIVE FIRE FROM THE TOWER IS STRICTLY PROHIBITED.
- B: ROOF IS LIMITED TO 5 PERSONNEL MAXIMUM NOT TO EXCEED 1,000 POUNDS.
- C: OIC/RSO MUST REQUEST THE KEYS TO THE TOWER AT CHECKOUT.
- D: LIMITED STORAGE IS AUTHORIZED IN THE TOWER. THE ROLLUP CONTAINER LOCATED BEHIND THE TOWER IS FOR AMMUNITION.
- E: ALL MATERIALS MUST BE COMPLETELY REMOVED AND AREA POLICED PRIOR TO POST INSPECTION.
- F: THIRD DECK IS FOR TARGET OPERATORS (SITS, MITS, TMITS) AND UNIT PERSONNEL TO OBSERVE TRAINING. MAX OCCUPANCY: 10
- G: ROLL-UP CONTAINER IS FOR TEMPORARY STORAGE/ISSUE OF AMMUNITION OR OTHER EQUIPMENT.
- H: UNIT LOCKS MUST BE REMOVED PRIOR TO POST INSPECTION AND THE CONTAINER POLICED AND SWEEPED.
- I: THE LOCK ON THE END OF THE CONTAINER IS FOR RANGE CONTROL USE AND MUST NOT BE REMOVED.
- J: ACCESS TO THE BATTERY CHARGING STATION IS LIMITED TO RMB PERSONNEL AND SUPPORT CONTRACTORS ONLY.
- K: IF THE BATTERY CHARGING STATION ALARM IS SOUNDING, CONTACT RANGE CONTROL IMMEDIATELY.

Figure-8





#### STATIC FIRING

- A: MAIN FIRING LINE AS SHOWN IN FIGURE-1 IS THE FIRING LINE FOR STATIC FIRING.
- B: TARGETS MAY BE PLACED AT ANY DISTANCE FORWARD OF THE MAIN FIRING LINE IN ACCORDANCE WITH PARAGRAPH (E) AND FIGURE-5.
- C: PERSONNEL MAY ENGAGE TARGETS STATIC OR WHILE MOVING STRAIGHT FORWARD.
- D: PERSONNEL MUST ENGAGE TARGETS TO THEIR DIRECT FRONT ONLY ACCORDING TO THE PDF SHOWN IN FIGURE-1.
- E: MULTIPLE TARGET ENGAGEMENT IS LIMITED.
- F: ALL GUN-TARGET LINES MUST REMAIN WITHIN THE LEFT/RIGHT LATERAL LIMITS AND NOT EXCEED THE AZIMUTHS IN FIGURE-1.
- G: CROSSFIRE IS PROHIBITED.

**Figure-9**

#### G. RANGE USE SPECIAL INSTRUCTIONS:

1. All range regulations and this SOP will be strictly adhered to.
2. The only weapons and ammunition approved for use on this range are listed in this SOP and in RFMSS. There must be no deviation from or modification to the approved weapons and ammunition.
3. The OIC and RSO must be present during firing.
4. Ensure range flags are posted, gates are secured/locked or secured/manned, ear protection is worn (eye protection for SRT), safety brief is given, Range Control contacted, and all fires are directed between the left and right lateral limits markers (black and white striped).
5. This range has internal conflicts and external conflicts with surrounding Training Areas (TAs) and roads that will prevent access to those areas from internal RTA roads. (Figure-10)



**-Internal Conflicts:** All DODICS (Figure-10)

- All live fire closes TA07A, TA09C, and TA09D.
- All live fire closes access to road 644 that runs parallel to the range.
- The 644A and 644B gates will be secured by Range Control and training units will not have access to these gates.
- Access to the area between these gates is prohibited without express permission from Range Control.

**-External Conflicts:** DODIC Specific (Figure-10)

- MCB-3 north of the MCB-3C gate to the MCB-3E gate is closed during live fire with 7.62mm.
- All other DODICs will close TA07A, TA09C, and TA09D.
- Use of 5.56mm and 7.62mm DODICS close TA09A, TA10A, and TA10C in addition to TA07A, TA09C, and TA09D
- Use of 5.56mm and 7.62mm DODICs will close Dirt-7 and access to Range-7 and Range-6 from MCB-3.

6. Firing from the observation tower (Figure-8) is prohibited.

7. Additional targets are limited to paper, plastic, wood framed, SRT, and TMITs. No other targets will be used such as tires, pallets, bowling pins, clay targets, cans, etc. Additional targets will be placed IAW Figure-5.

8. All brass, trash, targets, and materials will be removed completely at the end of training by the using unit. This includes any materials used to emplace targets or stage ammo such as pallets in the Roll-up.

9. Fire and **movement** (rushes) is authorized. Fire and **maneuver** is not authorized.

10. Units that do not occupy their range within two hours of their scheduled occupy time will lose the use of that range for that day.

11. Units that have requested contractor support (PITS targets, TMITs, battlefield effects simulators, etc.) that are not present on the specified range within 1 hour of the requested time and have not contacted RMB/TSCQ will forfeit all contracted support for the day.

12. Units that have occupied a range with approved contractor support and that have not begun to use that support within 2 hours of the requested hour of operation will forfeit all contracted support for the day.

13. Units that are training with contractor support that place themselves voluntary into check fire for 2 hours during the approved support operational hours will forfeit all support for the day.

14. Units that encounter situations where contractor support is delayed or interrupted by circumstances beyond the control of the requesting unit (RMB directed check fire, ASP support, MEDEVAC, etc.) must contact RMB/TSCQ to arrange continued support within the scope of the contract and available assets.



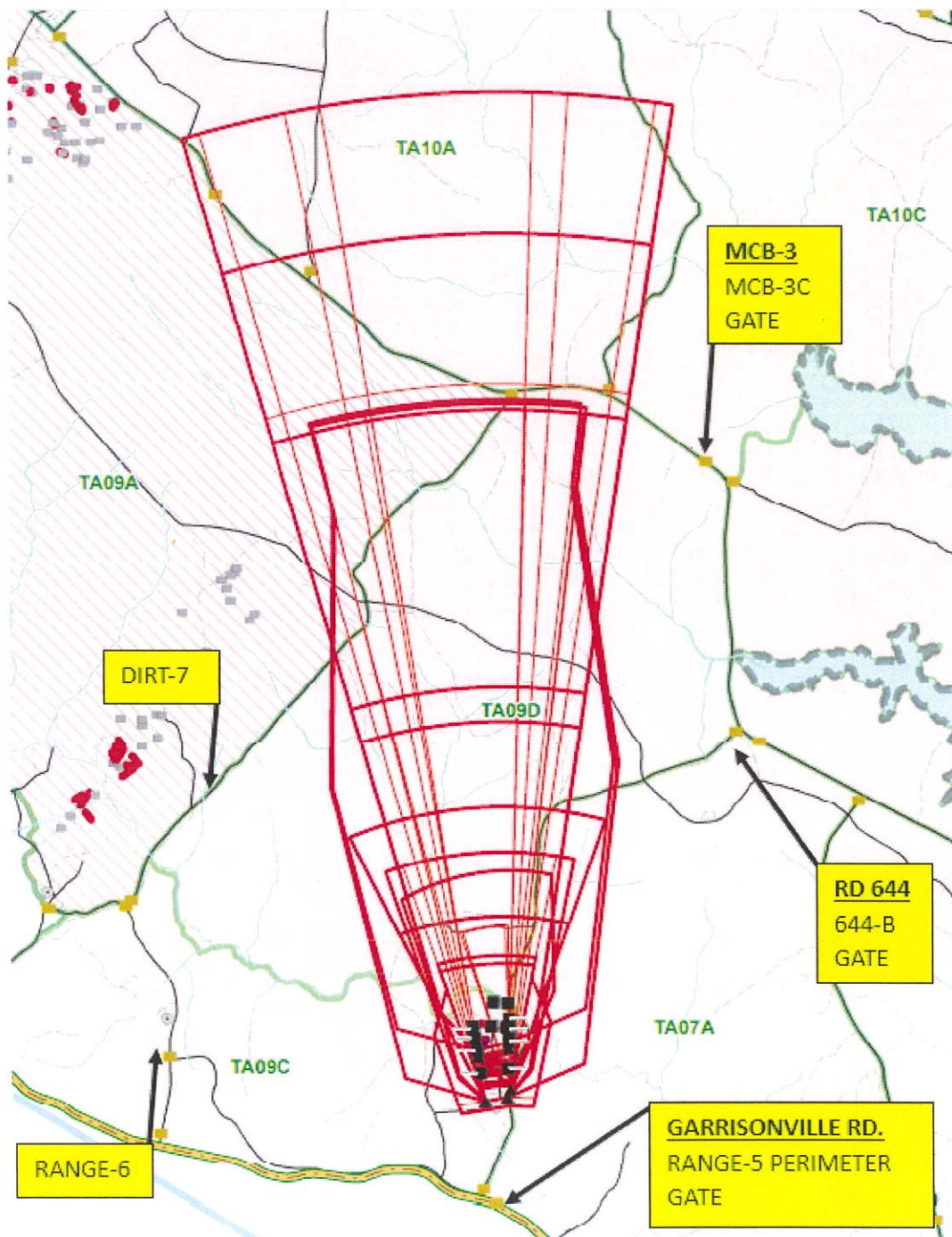


Figure-10



**H. APPLICABLE MAP SHEET.** All grid coordinates listed in this order apply to the Quantico Military Installation Map V834S Edition 5-NGA 1:25,000

**I. FACILITIES**

Towers: 1

Sheds: 1

Ammo Breakdown: 0

Parking: Limited

Description of Other Structures:

-Open Bleachers

-Porta-Johns

-Battery Charging Station

**J. UTILITIES AVAILABLE**

Electricity: Yes (in tower)

Lights: none

Water System: None

**K. INSTALLED COMMUNICATIONS.** None

**L. MEASURED DISTANCES**

	<b><u>MILES</u></b>	<b><u>MGRS</u></b>
Range Control	5.5	87406360
TBS	5.5	87106390
WTBN	6.0	87806740
ASP	7.5	91256605
Quantico EMS/Fire (Fire House 3)	6.5	89606710
Closest EMS (Rock Hill)	1.5	82606314
Mainside Gate	9.5	94406440
Camp Upshur	11.5	80007850
Nearest MEDEVAC LZ	0.1	81526562 (LZ LOON)

**Directions to MEDEVAC LZ:** LZ Loon is located on Range 5 proper.

**NOTES:**

1: The actual location of the MEDEVAC LZ will be determined by Quantico Fire and Emergency Services at the time of the emergency. LZ listed here is for reference only.

2: Due to proximity to emergency services, Stafford County may be the first to respond. This is done under the Mutual Aid Agreement between MCB Quantico and surrounding Counties.

**M. AVAILABLE DAYS/HOURS:** 362 Days. 0500-2359. All other times require waiver.

**N. AREA SUITABILITY**

<b><u>Unit Type</u></b>	<b><u>Unit Size</u></b>	<b><u>Number of Units</u></b>
Combat Arms	Platoon	1

**O. GEOGRAPHICAL DATA**

Access Routes: Entrance from Cannon Trail, Route 610 (Garrisonville Rd) and Rd. 644

Soil Type: Dirt/Gravel

Terrain Type: Level with undulation and open bunkers.



Vegetation: Grass

**P. COMMUNICATION REQUIREMENTS:**

1. A radio check is required immediately upon occupying any portion of the RTA, every 30 minutes at top/bottom of the hour in a live fire status and every 3 hours top of the hour in a non-live fire status.
2. The Range Control Facility (RCF) Fire Desk Safety Net call sign is "Range Control". Your call sign is "**RANGE FIVE**".
3. The Primary means of communication with the RCF (Fire Desk) on the Safety Net is via the ELMR Radio provided to OIC/RSO at time of check out on the talk group "RC Safety" (ground) and 134.1 VHF (air).
4. The Secondary means of communication with the RCF (Fire Desk) on the Safety Net is via the OIC/RSO Cell Phone to: 703-784-5321 or 5322. Cell phone number is verified at time of occupation.
5. OIC/RSO will monitor the RCF Primary and Secondary Safety Nets at all times. Instant communication is required.
6. Any unit with organic ELMR radios will have the "RC Safety" talk group programed in and use those radios as their primary means of communication within the RTA.
7. Units without organic ELMR assets will be issued ELMR radios from RMB when checking out the range.
8. Approved Non-ELMR radios are only authorized for internal communication (ground).
9. If the RCF cannot reach a unit within the RTA via primary communication, the unit will be contacted via the secondary means of communication.
10. Upon loss of primary communication the OIC/RSO will initiate a "check fire"/cease training status and will contact the RCF via secondary communication. This communication will be maintained while primary communication is being restored. Units may only resume firing/training once primary communication has been re-established and clearance is granted by the RCF.
11. OIC/RSO will comply with all guidance and commands given by the RCF.

**Q. INJURY CLASSIFICATIONS:** Injuries are classified into the following categories to aid in casualty evacuation from the RTA.

1. ROUTINE. Routine injuries are those injuries that are not threatening to life, limb or eyesight; and conditions or illnesses treatable by medication or procedures available at the base medical facilities.
2. PRIORITY. Priority injuries are those injuries that require immediate medical attention but are not threatening to life, limb, or eyesight if treated promptly.
3. URGENT. Urgent injuries are severe injuries that are threatening to life, limb, or eyesight and require immediate medical attention.



4. MASS CASUALTY. A mass casualty is a series of injuries with multiple priority and urgent medical patients.

**R. MEDICAL EVACUATION (MEDEVAC) PROCEDURES:**

1. Injury occurs.
2. Range will immediately cease fire.
3. Medical support evaluates/treats injured personnel.
4. Range OIC/RSO notifies the RCF of the injury, is the victim conscious/unconscious and what type of MEDEVAC transportation is requested (ground/air).
5. The OIC/RSO must maintain constant radio contact with Range Control and awaits further instructions.

A handwritten signature in red ink, appearing to read "John D. [unclear]", is written over a horizontal line.

Installation Range safety Officer

Date: 11 Jul 2024