

SOP

RANGE 6

INFORMATION

Description: Multipurpose Small Arms 0-75m
Status: Active
Location: 7972065640
Number of Firing Points: Up to 25

RANGE USES

Primary Use: Multipurpose Small Arms Live Fire for squad-sized units.
Alternate Uses: BZO.

WEAPONS ACCOMMODATED: Detailed list is maintained in the Range Facility Management Support System (RFMSS).

- Service Rifle
- Pistol
- Shotgun
- Hand Grenades (Prac)
- Approved foreign weapons up to 5.45mm or equivalent.
- Light Machine Guns (5.56mm)
- Automatic rifles (5.56mm)
- Hand-held grenade launcher
- Nonlethal Weapons

AMMUNITION AUTHORIZED: Detailed list is maintained in the Range Facility Management Support System (RFMSS).

- 5.56mm (All)
- Pistol (All)
- Shotgun (All)
- Approved foreign weapons up to 5.45mm or equivalent.
- Hand Grenades (Prac/Smoke/Illum)
- 40mm grenades (Illumination)
- Nonlethal ammunition (All, with coordination)

TARGETS/SIMULATORS/DEVICES:

- Portable Infantry Targets (PITS), Training IED's, simulators, etc. are approved for this range and must be coordinated through the Training Systems Support Desk (TSSD).
- Additional targets are limited to paper, wood, plastic and approved ballistic steel reactive targets (SRT).
- OIC/RSO must ensure all targets are placed and engaged to ensure rounds do not exceed the left and right lateral limits.
- Steel reactive targets (SRTs) must be a minimum of 3/8" and constructed of AR-500 or greater steel. Use of 5.56mm on SRTs is not authorized.
- EPR ammunition (M855A1/M80A1) is NOT authorized to be fired on SRTs or steel protective plates for Portable Infantry Targets (PITS).
- Contact Training Support Center (TSC) at (703)432-7026/7969 for target support or questions.

- Trackless Mobile Infantry Targets (TMITs) are not approved on this range.
- All new events must be coordinated with the Installation Range Safety Officer (IRSO) no less than 30 days prior to any new event.

Minimum engagement distances for ballistic steel reactive targets (SRT):

- Pistol: 7 meters
- Shotgun (buck/bird): 10 meters
- Shotgun (slug): 50 meters

PRIMARY DIRECTION OF FIRE. North

RANGE USE RESTRICTIONS/COMMENTS

1. The weapons, ammunition and SDZ's included in this certification/SOP are the only ones to be used on this range.
2. OIC and RSO must be present while live fire is in progress.
3. All brass, trash, targetry and materials will be removed completely at the end of training by the using unit. This includes any materials used to place targets on.
4. Ensure range flags are posted, ear protection is worn (eye protection for steel), safety brief is given, Range Control contacted and all fires are directed between the left and right lateral limits markers (black and white striped).
5. Firing on the move is authorized. Fire and **maneuver** is not authorized.

Any firing on the move will be conducted in the following manner:

-Movement will be restricted to walking straight forward, to the rear and simple button-hook techniques. (No fire team/individual rushes)

-There will be no more than two shooters per instructor/safety supervisor moving at a time. (Example: 7 shooters = 4 instructor/safety supervisors).

-There will be at least one target width separation between shooters.

-Targets will be no farther than 50m.

-Targets will be constructed from paper, plastic, wood or steel. No steel targets will be engaged with 5.56mm.

-Shooters will fire at single targets only, no multiples.

-Single shot only, no automatic fire.

6. Targets are limited to wood, paper, plastic and approved steel. No other targets will be used such as bowling pins, clay targets, cans, etc.

7. Steel targets will not be engaged with 5.56mm.
8. Firing will be oriented so that projectiles do not impact the Range 6 pond.
9. Vehicles are not allowed on the firing area of Range 6.
10. The Range 6 gate is an Installation perimeter gate. It will be secured during firing with red flag posted.
11. Units that have requested contractor support (PITS targets, Training IED's, simulators, etc.) are required to contact a Government representative (TECOM Systems Support Officer (SSO) or Fire Desk) if the unit will not be present on the specified range within 1 hour of the approved time in RFMSS.
12. Units that have occupied a range with approved contractor support (PITS targets, Training IED's, simulators, etc.) and that have not begun to use that support within 2 hours of the approved time in RFMSS will forfeit all contracted support for the day.
13. Units that are training with contractor support (PITS targets, Training IED's, simulators, etc.) that place themselves into a voluntary check fire for 2 hours or more during the approved support hours will forfeit remaining support for the day.

NOTE: Units that encounter situations where contractor support (PITS targets, Training IED's, simulators, etc.) is delayed or interrupted by circumstances beyond the control of the requesting unit (RMB directed check fire, ASP support, MEDEVAC, etc.) must contact a Government representative (SSO or Fire Desk) in order to arrange continued support within the scope of the contract and available assets.

14. If Training IED's or simulators, are to be used in this facility, qualified personnel trained on the systems must be present.

FACILITIES (Number of Each)

Towers: 0
 Sheds: 1
 Ammo Breakdown: 0
 Parking: Limited

Description of Other Structures:

UTILITIES AVAILABLE

Electricity: No
 Lights: No
 Water System: None

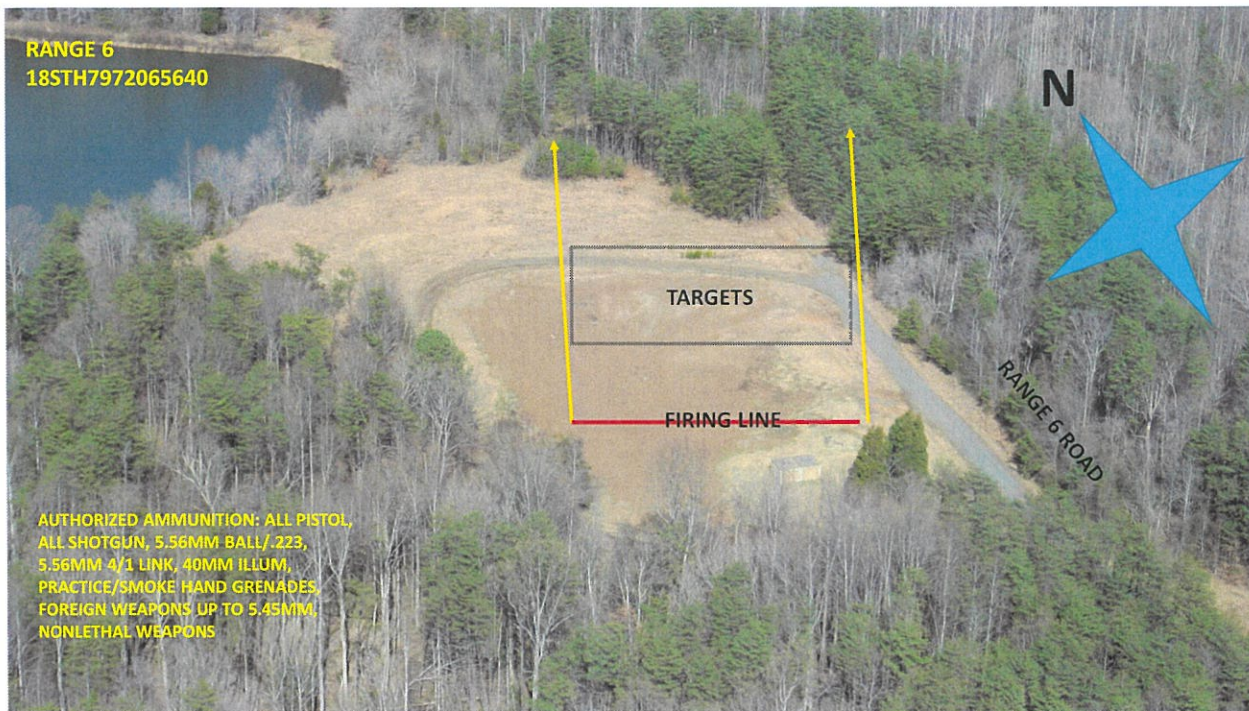
INSTALLED COMMUNICATIONS. None

MEASURED DISTANCES **MILES** **MGRS**

Range Control	8.0	87406360
TBS	7.5	87106390
WTBN	8.0	87806740
ASP	12.5	91256605
EMT/Fire (Fire House 3)	10.5	89606710
Camp Upshur	10.5	80007850
Nearest MEDEVAC LZ	0.0	79726564 LZ SWAN)

DIRECTIONS TO MEDEVAC LZ: LZ Swan is located on Range 5 itself.





LASERS AUTHORIZED. Class 1-3R. Standard approved aiming devices mounted on approved service weapons are authorized when safety screw is installed reducing power output.

AREA SUITABILITY

<u>Unit Type</u>	<u>Unit Size</u>	<u>Number of Units</u>
Combat Arms	Platoon	1

GEOGRAPHICAL DATA

Access Routes: Road entrance from Route 610

Soil Type: Dirt/Gravel
 Terrain Type: Level
 Vegetation: Grass

COMMUNICATION REQUIREMENTS:

1. A radio check is required immediately upon occupying any portion of the RTA, every 30 minutes in a live fire status and every 3 hours in a non-live fire status.
2. The Range Control Facility (RCF) Fire Desk Net Control call sign is "Range Control". Your call sign is **"Range 6"**.
3. The primary RCF Fire Desk Net Control frequencies are: ELMR talk group "RC Safety" (ground) and 323.7 AM UHF (air).
4. The secondary RCF Fire Desk Net Control is telephone, numbers: 703-784-5321 or 5322.

5. OIC/RSO will monitor the RCF primary and secondary Safety Nets at all times. Instant communication is required.
6. Any unit with organic ELMR radios will have their ELMR radios programmed with the "RC Safety" talk group and use those radios as their primary means of communication within the RTA.
7. Units without organic ELMR assets will be issued ELMR radios from RMB upon check-in.
8. Approved Non-ELMR radios are only authorized for internal communication (ground).
9. If the RCF cannot reach a unit within the RTA via primary communication, the unit will be contacted via the secondary means of communication.
10. Upon loss of primary communication the OIC/RSO will initiate a "check fire"/cease training status and will contact the RCF via secondary communication. This communication will be maintained while primary communication is being restored. Units may only resume firing/training once primary communication has been re-established and clearance is granted by the RCF.

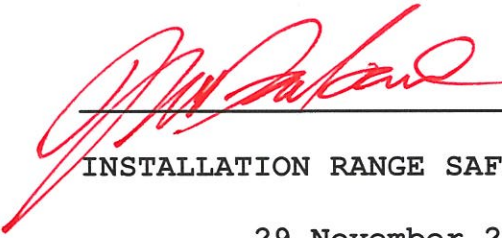
INJURY CLASSIFICATIONS:

Injuries are classified into the following categories in order to aid in casualty evacuation from the RTA.

1. ROUTINE. Routine injuries are those injuries that are not threatening to life, limb or eyesight; and conditions or illnesses treatable by medication or procedures available at the base medical facilities.
2. PRIORITY. Priority injuries are those injuries that require immediate medical attention but are not threatening to life, limb, or eyesight if treated promptly.
3. URGENT. Urgent injuries are severe injuries that are threatening to life, limb, or eyesight and require immediate medical attention.
4. MASS CASUALTY. A mass casualty is a series of injuries with multiple priority and urgent medical patients.

MEDICAL EVACUATION (MEDEVAC) PROCEDURES:

1. Injury occurs.
2. Range immediately cease-fires.
3. Medical support evaluates/treats injured personnel.
4. Range OIC/RSO notifies the RCF of the injury, is the victim conscious/unconscious and what type of MEDEVAC transportation is requested (ground/air).
5. The OIC/RSO must maintain constant radio contact with Range Control and awaits further instructions.



INSTALLATION RANGE SAFETY OFFICER

29 November 2022