

RANGE 12

SOP

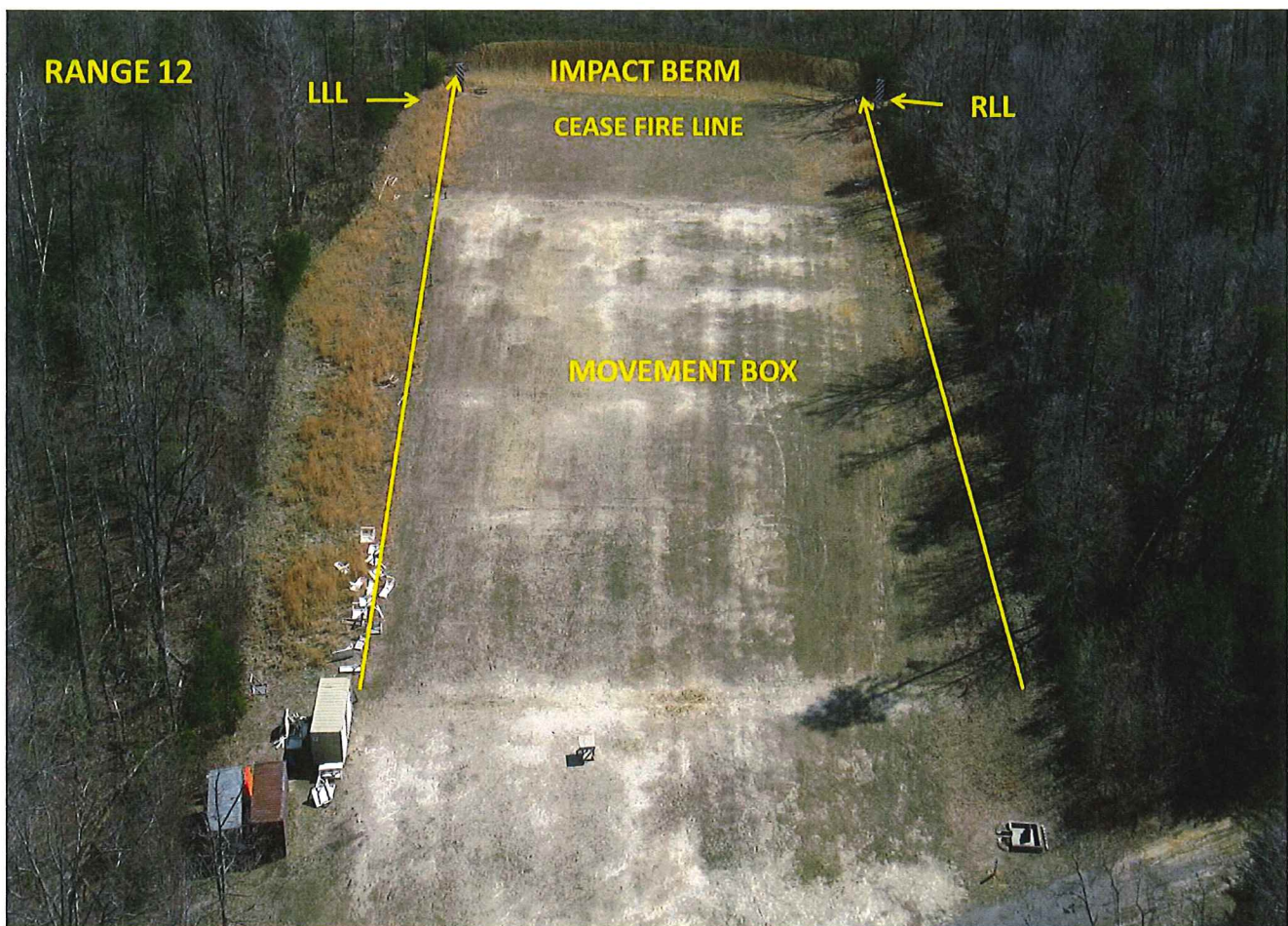
RANGE DESCRIPTION

Range 12 is an active, small arms, live-fire range located at Grid 83607360. It is accessible from MCB-1 and Rt 617.

Primary Uses: Standard, multipurpose small arms direct fire.

Alternate uses: BZO Range

Number Firing Points: 25 Maximum Firing distance: 150M



WEAPONS AUTHORIZED:

- Pistol
- Shotgun
- Hand held Grenade Launcher
- Service Rifle
- Sniper Rifle
- Light and Medium Machine Guns
- AT-4 Trainer
- SMAW Trainer

-Approved foreign weapons

AMMUNITION AUTHORIZED:

- Pistol (all)
- Shotgun (All)
- Shotgun Non-lethal
- 5.56mm (all)
- 7.62mm (all)
- M203 Illum/Prac/Smoke
- AT-4 Trainer
- SMAW Trainer
- Approved foreign ammunition (Up to 7.62mm X 54R)

TARGETS/SIMULATORS/DEVICES:

- Paper, plastic or wood and provided by user.
- Approved ballistic steel targets are authorized.
- Steel targets will not be engaged closer than 100m with 5.56mm or 7.62mm.
- Targets must be placed so that impacts will land within lateral limit markers.
- Contact Training Support Center (TSC) at (703)784-4492 for other targetry

ADDITIONAL RANGE INFORMATION:

INFORMATION

Description:	Small arms range
Status:	Active
Location:	83607360

PRIMARY DIRECTION OF FIRE. South

RANGE USE RESTRICTIONS/COMMENTS

1. The only weapons and ammunition approved for use on this range are listed in this SOP. There shall be no deviations from or modifications to the approved weapons and ammunition.
2. The OIC and RSO must be present during firing.
3. All range regulations and SOP's will be adhered to.
4. Ensure range flags are posted, ear protection is worn (eye protection for steel), safety brief is given, Range Control contacted and all fires are directed between the left and right lateral limits markers (black and white striped).
5. All brass, trash, targetry and materials will be removed completely at the end of training by the using unit. This includes any materials used to place targets on.

6. Targets are limited to wood, paper, plastic, approved ballistic steel targets. No other targets will be used such as bowling pins, clay targets, cans, etc.

7. Ballistic steel targets are authorized on this range in accordance with the Safety of Use Memorandum (SOUM) for steel targets. **NOTE*Steel cannot be fired on with 5.56mm or 7.62mm closer than 100m.**

8. All targets must be placed so that when fired at, no rounds will escape the lateral limit markers.

9. Units that do not occupy their range within two hours of their scheduled occupy time will lose the use of that range for that day.

10. Units that have requested contractor support (i.e., automated targets, PITS targets, battlefield effects simulators, etc.) that are not present on the specified range within 1 hour of the requested time and have not contacted RMB/TSCQ will forfeit all contracted support for the day.

11. Units that have occupied a range with approved contractor support (i.e., automated targets, PITS targets, battlefield effects simulators, etc.) and that have not begun to use that support within 2 hours of the requested hour of operation will forfeit all contracted support for the day.

12. Units that are training with contractor support (i.e., automated targets, PITS targets, battlefield effects simulators, etc.) that place themselves voluntary into check fire for 2 hours during the approved support operational hours will forfeit all support for the day.

NOTE: Units that encounter situations where contractor support (i.e., automated targets, PITS targets, battlefield effects simulators, etc.) is delayed or interrupted by circumstances beyond the control of the requesting unit (i.e., RMB directed check fire, ASP support, MEDEVAC, etc.) must contact RMB/TSCQ in order to arrange continued support within the scope of the contract and available assets.

13. 7.62mm Special ball will only be fired in the center of the range.

14. Fire and Movement (Firing on the move) is authorized.

FACILITIES (Number of Each)

Towers: 0
Sheds: 0
Ammo Breakdown: 1
Parking: Yes
Description of Other Structures: None

UTILITIES AVAILABLE

Electricity: None
Lights: None

Water System: None

INSTALLED COMMUNICATIONS. None

<u>MEASURED DISTANCES</u>	<u>MILES</u>	<u>MGRS</u>
MT (POL) TBS Distance	8.0	87106390
Rations Distance	8.2	87406374
To ASP Distance	8.5	91256605
EMT/Fire (Fire House 3)	7.8	89606410
 NEAREST MEDEVAC LZ	 0.0	 83607360 (Range 12)

LASERS AUTHORIZED. Class 1 - 3R. Standard aiming devices mounted on approved service rifles. Class 3B can be fired if safety filter is on, reducing power output.

AVAILABLE DAYS/HOURS. 350/0500-2259 (Airspace needs to be scheduled for any other times).

AREA SUITABILITY

<u>Unit Type</u>	<u>Unit Size</u>	<u>Number of Units</u>
Combat Arms	Squad	1

GEOGRAPHICAL DATA

Access Routes: MCB 1 and Route 617
Soil Type: Dirt
Terrain Type: Small hills
Vegetation: Grass/Woodlands

APPLICABLE MAP SHEET. All grid coordinates listed in this order apply to the Quantico Military Installation Map V834S Edition 4-NGA 1:25000.

COMMUNICATION REQUIREMENTS:

1. A radio check is required immediately upon occupying any portion of the RTA, every 30 minutes in a live fire status and every 3 hours in a non-live fire status.
2. The Range Control Facility (RCF) Fire Desk Net Control call sign is "Range Control". Your call sign is "Range XX" (name of range, training area or facility unit is occupying).
3. The primary RCF Fire Desk Net Control frequencies are: ELMR talk group "RC Safety" (ground) and 323.7 AM UHF (air).
4. The secondary RCF Fire Desk Net Control is telephone, numbers: 703-784-5321 or 5322.
5. OIC/RSO will monitor the RCF primary and secondary Safety Nets at all times. Instant communication is required.

6. Any unit with organic ELMR radios will have their ELMR radios programed with the "RC Safety" talk group and use those radios as their primary means of communication within the RTA.
7. Units without organic ELMR assets will be issued ELMR radios from RMB upon check-in.
8. Approved Non-ELMR radios are only authorized for internal communication (ground).
9. If the RCF cannot reach a unit within the RTA via primary communication, the unit will be contacted via the secondary means of communication.
10. Upon loss of primary communication the OIC/RSO will initiate a "check fire"/cease training status and will contact the RCF via secondary communication. This communication will be maintained while primary communication is being restored. Units may only resume firing/training once primary communication has been re-established and clearance is granted by the RCF.

INJURY CLASSIFICATIONS:

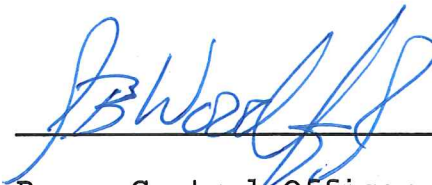
Injuries are classified into the following categories in order to aid in casualty evacuation from the RTA.

1. ROUTINE. Routine injuries are those injuries that are not threatening to life, limb or eyesight; and conditions or illnesses treatable by medication or procedures available at the base medical facilities.
2. PRIORITY. Priority injuries are those injuries that require immediate medical attention but are not threatening to life, limb, or eyesight if treated promptly.
3. URGENT. Urgent injuries are severe injuries that are threatening to life, limb, or eyesight and require immediate medical attention.
4. MASS CASUALTY. A mass casualty is a series of injuries with multiple priority and urgent medical patients.

MEDICAL EVACUATION (MEDEVAC) PROCEDURES:

1. Injury occurs.
2. Range immediately cease-fires.
3. Medical support evaluates/treats injured personnel.
4. Range OIC/RSO notifies the RCF of the injury, is the victim conscious/unconscious and what type of MEDEVAC transportation is requested (ground/air).
5. The OIC/RSO must maintain constant radio contact with Range Control and awaits further instructions.

*Minor injuries and illnesses not requiring medical services need not be reported to the RCF but should be reported in unit training logs.



Range Control Officer

Date: 14 JUNE 2016