

RANGE 14

SOP

RANGE DESCRIPTION

- Range 14 is an active Squad in the offense Fire and Movement range located at Grid 87907310.
- Range 14 is accessible from MCB 1.
- This range has covered bleachers, a non-live fire observation tower, and roll-up storage containers.
- Firing from the tower or bleachers is prohibited.
- Principal direction of fire is 214.51° to 215.52°.

Primary Use: Multi-purpose small arms range for squad sized units in the offensive conducting Fire and Movement, buddy pair, and squad rushes engaging targets to the direct front only.

Alternate Uses:

- Multipurpose Machine Gun Range. Max Firing Distance: 610M
- Limited engagement of Trackless Mobile Infantry Targets (TMITs).
- Limited handheld 40mm grenade and rocket engagements.

NUMBER OF FIRING POINTS:

- There are multiple firing points/lanes on Range 14 with (55) Stationary Infantry Targets (SITs) and (16) Mobile Infantry Targets (MITs).
- There are (6) distinct lanes or "Operating Boxes" (Op-box) for the Trackless Mobile Infantry Targets (TMITs) available to augment the MITs and SITs in the movement box; these targets must be engaged to the direct front only.
- Additionally, TMITs have a Crossfire Op-Box down range beyond the Limit of Advance (LOA) that can be engaged from anywhere along the LOA to any TMIT in the Crossfire Op-Box. See Figures 4 and 5.

Notes:

- There are no gates to limit access to Range 14, OIC/RSO must be vigilant to prevent accidental encroachment.
- OIC/RSO must request the key for the Observation Tower. Live fire from the tower is prohibited.
- Placement of all additional targets must be done in strict accordance with Figure-3 and paragraph D-6.
- Use of 6.8mm ammunition on SRT and TMITS is prohibited. (SOUM 8-24).

Conflicts: See Figure-3 and paragraph G-7 below.

- Range 14C does not conflict with Range 14.
- Range 14D does not conflict with Range 14.
- Range 14 conflicts with Range 14C. Downrange movement on Range 14C is restricted when Range 14 is hot.
- Direct coordination between OIC/RSO of each range is required for any movement downrange on Range 14C forward of the 100m movement box. (Figure-3).
- There is no movement allowed forward of the Limit of Advance on Range 14. (Figure-2)
- Range 14 closes TA12A and TA10B.
- Use of TMITS closes TA12B and access to Rd 618 from Blackrock Rd. North from the 618E gate.
- Check the Range Facility Management Support System (RFMSS) for all active conflicts.



RANGE 14

SW



Figure-1

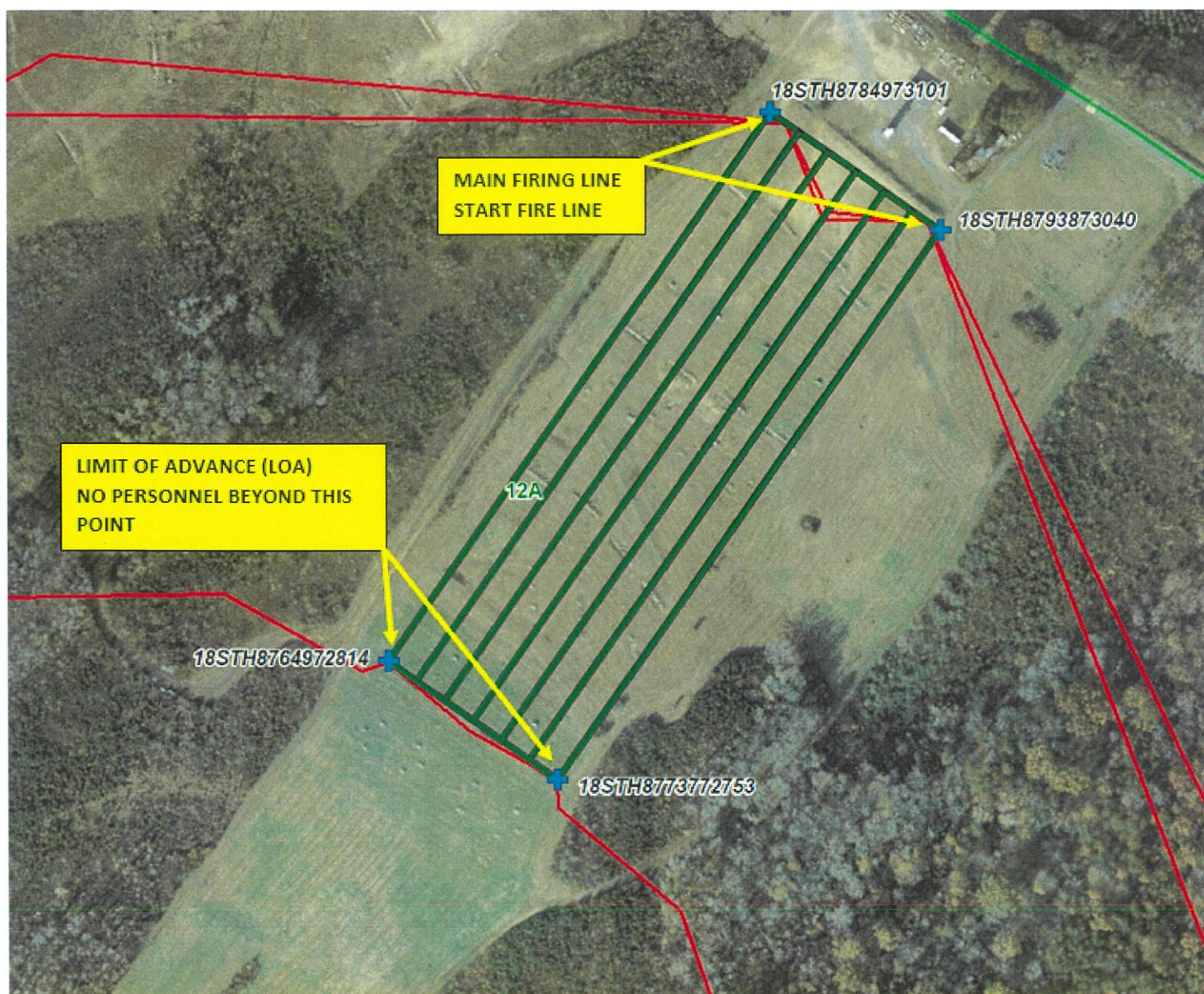
A. WEAPONS ACCOMMODATED: Detailed list is maintained in RFMSS.

- Rifles
- Pistols
- Shotguns
- Hand held grenade launchers
- Hand Grenades (Practice/Illum)
- SMAW/AT-4/M72 LAAW Trainers
- Light and Medium Machine Guns
- Approved Foreign Weapons

B. AMMUNITION AUTHORIZED: Detailed list is maintained in the RFMSS.

- 5.56mm (All)
- 7.62mm (All)
- Pistol (All)
- Shotgun (All)
- SMAW 9mm
- 40mm Illum/Practice
- AT-4 9mm
- Grenade Illum/Practice
- M72 LAAW Sub-Cal Trainer

C. LASERS AUTHORIZED: Class 1 – 3R. Standard aiming devices mounted on approved weapons. Class 3B (Ex: PEQ-16) can be fired if safety screw is installed in lock out, preventing high power settings.



MOVEMENT BOX

- A: THE GRID COORDINATES ABOVE SHOW THE FOUR CORNERS OF THE MOVEMENT BOX.
- B: MOVEMENT BOX MEASURES 108M WIDE AND 350M DEEP.
- C: THERE ARE 6 LANES AT 18M WIDE DEPICTED HERE IN GREEN FOR REFERENCE.
- D: THESE REFERENCE LANES ARE ALSO THE TMIT OP-BOXES SHOWN IN FIGURE-4.
- E: ALL CONCEPT OF OPERATIONS (CONOPS) AND SCHEMES OF MANEUVER (SOM) MUST STAY IN THIS MOVEMENT BOX.
- F: ALL FIRES MUST BE TO THE DIRECT FRONT OF THE SHOOTER AND NOT EXCEED THE LIMITS OF THIS BOX.
- G: CROSSFIRE IN THIS MOVEMENT BOX IS PROHIBITED.
- H: PERSONNEL ARE NOT AUTHORIZED TO MAKE MOVEMENT BEYOND THE LOA.
- I: THE LOA ALSO SERVES AS THE FIRING LINE FOR THE TMIT CROSS-FIRE OP-BOX SHOWN IN FIGURE 5.
- J: FIRING FROM THE LOA IS THE ONLY AREA OF RANGE 14 WHERE CROSSFIRE IS AUTHORIZED.

Figure-2

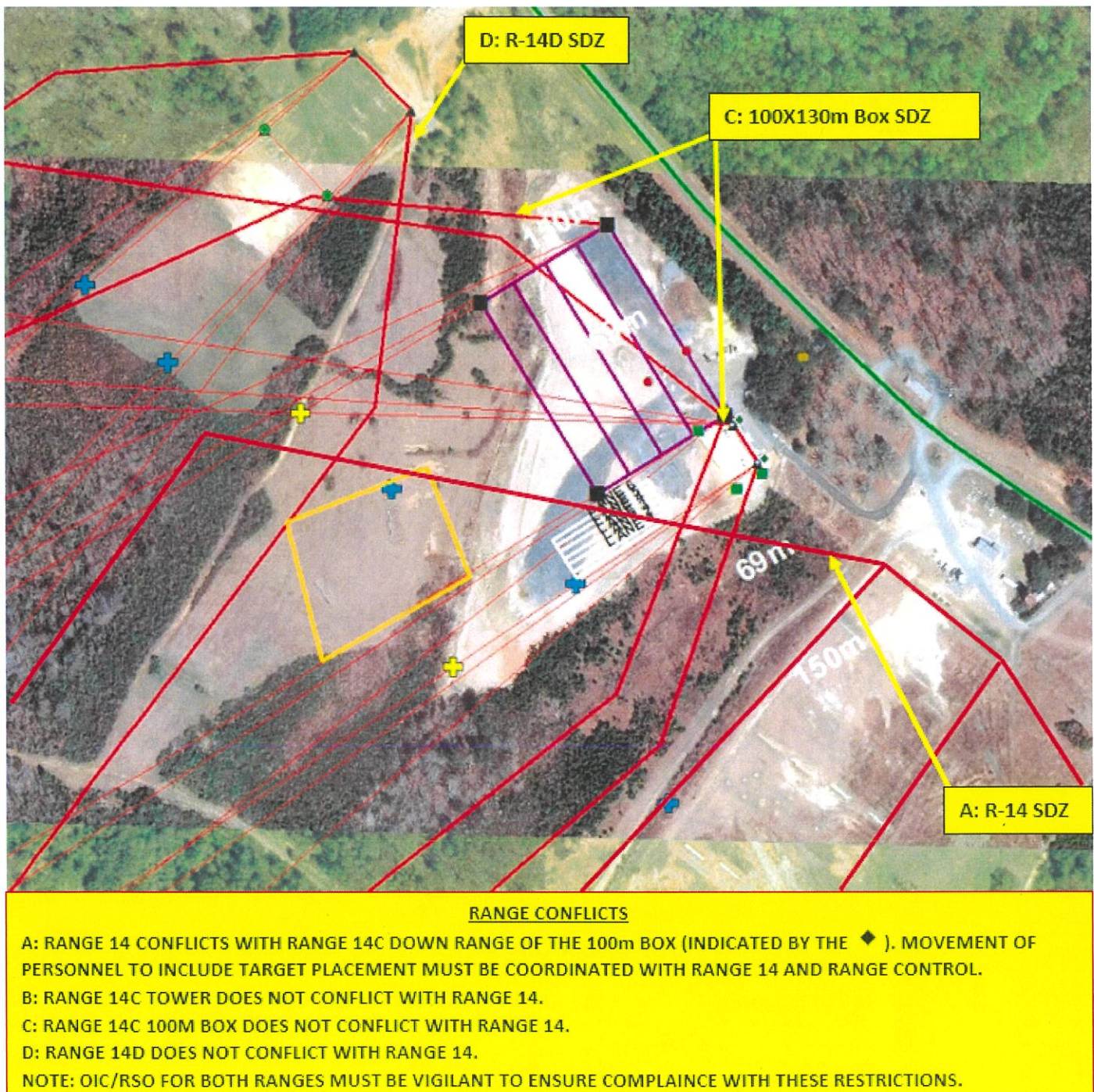


Figure-3

D: TARGETS/SIMULATORS/DEVICES:

1. This range has 71 automated targets that must be requested for use under "R-14 Support Services" in the Training Systems Support Desk (TSSD) when the range is requested in RFMSS.
2. Multiple lanes consisting of (55) SITS and (16) MITs protected by SACON concrete bunkers. These targets are battery-operated, and Contractor controlled. Maximum range 610m.
3. Trackless Mobile Infantry Targets (TMITs) are approved on this range and must be coordinated through the TSSD.
4. (6) distinct lanes or "Operating Boxes" (Op-box) for the TMITs that augment the MITs and SITS in the main movement box. See Figures 5 and 6.
5. TMITs will operate in the designated areas depicted in Figure 5 and Figure 6 only.

6. Additional targets are limited to paper, plastic, wood framed, SRT, and TMITs. No other targets will be used such as tires, pallets, bowling pins, clay targets, cans, etc. Additional targets will be placed IAW Figure-4.
7. OIC/RSO must ensure all additional targets are placed and engaged to the direct front of the shooter so that all gun-target lines stay within lateral limit markers of this range.
8. Crossfire is not authorized from anywhere in the movement box between the Main Firing Line and the LOA.
9. Steel reactive targets (SRTs) must be a minimum of 3/8" and constructed of AR-500 or greater steel.
- 10. EPR ammunition (M855A1/M80A1) is NOT authorized to be fired on SRTs, TMITs, or steel protective plates for Portable Infantry Targets (PITS).**
11. Contact Training Support Center (TSC) at (703)432-7026/7969 for target support or questions.

E. MINIMUM SAFE ENGAGEMENT DISTANCES FOR SRT AND TMITs:

-Pistol:	7 meters
-Shotgun (bird/buck):	10 meters
-Shotgun (slug):	45 meters
-5.56mm (soft-core):	23 meters
-5.56mm (steel penetrator):	69 meters
-5.45mm:	69 meters
-7.62mm Ball/linked:	150 meters
-7.62mm Special Ball:	150 meters
-7.62x39mm/7.62x54mm:	150 meters
-.300 Win Mag/Norma Mag:	375 meters
-.338 Lapua Mag/Norma Mag:	375 meters
-.50 cal:	375 meters
-6.5mm Creedmoor	375 meters (RTAM edict)
-6.8mm	NOT AUTHORIZED (SOUM 8-24)

NOTES:

- 1- Use of pistol calibers on TMITs are not authorized due to the short engagement distance and geometry of the gun target lines exceeding the boundary of this range and the Installation boundary.
- 2- Use of 6.5mm Creedmoor ammo is limited to 375m engagements by RTAM edict.
- 3- Use of 6.8mm ammo is prohibited on SRT and TMITs IAW SOUM 8-24.

F. TRACKLESS MOBILE INFANTRY TARGETS (TMITs):

-TMITs are approved for this range and must be used in accordance with the following instructions, Figure-5, and Figure-6.

1. Op-Box 1 (Lanes): Figure-5

- Each Lane is approximately 18m wide.
- Crossfire is not authorized in Op-Box 1.
- Personnel moving down range must engage TMITs and all targets to their direct front only. OIC/RSO must include this in the detailed safety brief.
- TMITs are authorized to execute any scenario the terrain and width of each lane allows.
- TMITs must maintain the minimum engagement distance from advancing troops according to caliber in paragraph (E) above.
- Neutralized TMITs must exit the range in the safest most direct manner possible to prevent unnecessary ricochet hazards.

2. Op-Box 2 (Crossfire): Figure 6

- Crossfire is authorized in Op-Box 2 (Crossfire) using the LOA as the firing line.
- Shooters may engage any TMIT from any point along the LOA.
- TMITS must maintain the minimum engagement distance from advancing troops according to caliber in paragraph (E) above.
- TMITS are authorized to execute any scenario the terrain and dimensions of this Op-Box allow.
- TMITS must remain inside this Op-Box.

Placement of additional targets around SITs and MITs

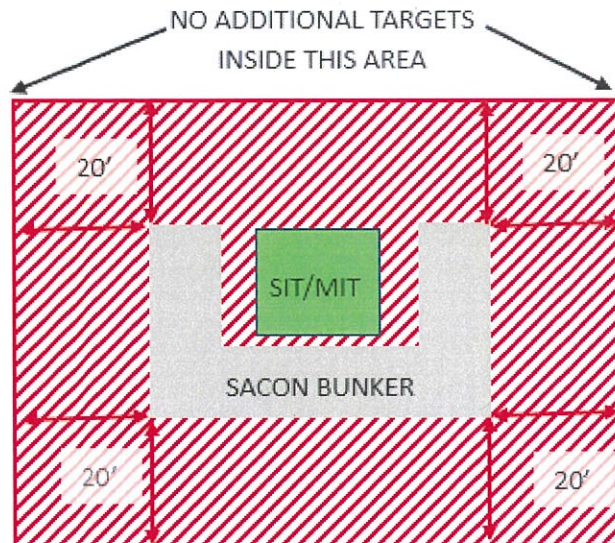


Figure-4

Trackless Mobile Infantry Target (TMIT) Operating Box (Lanes 1-6)

SW

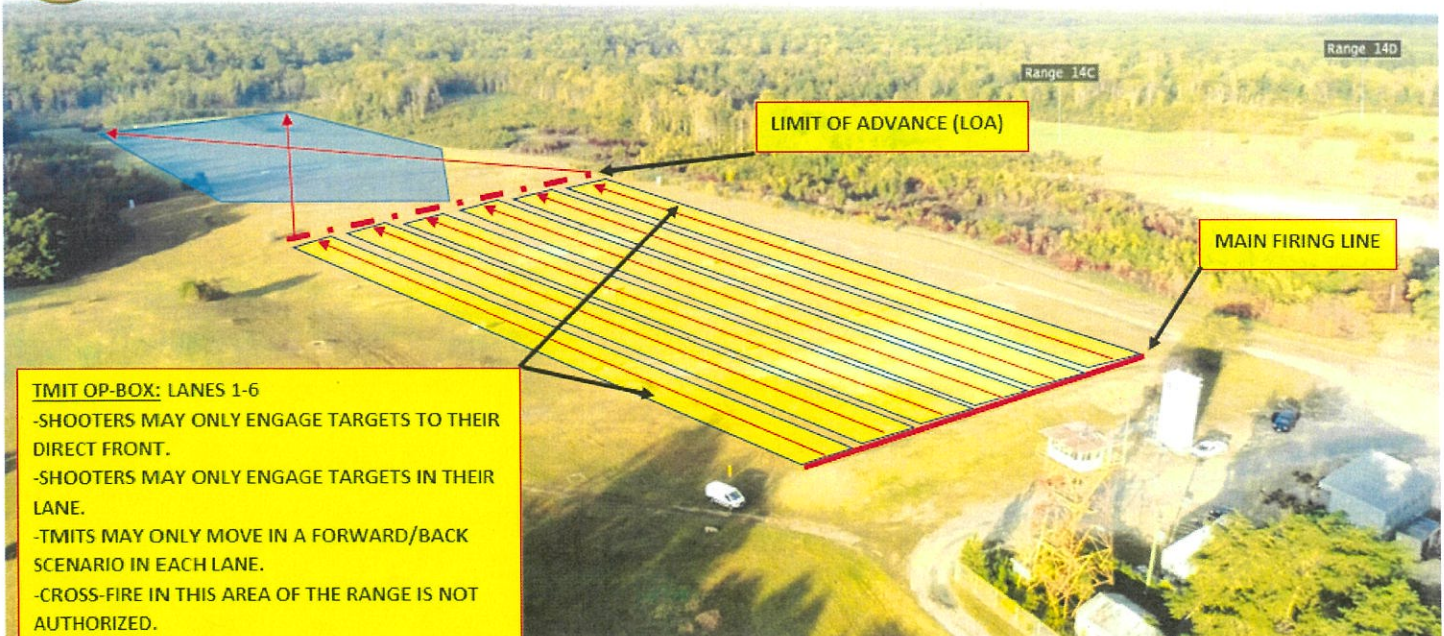


Figure-5

Trackless Mobile Infantry Target (TMIT) Cross-Fire Operating Box



SW

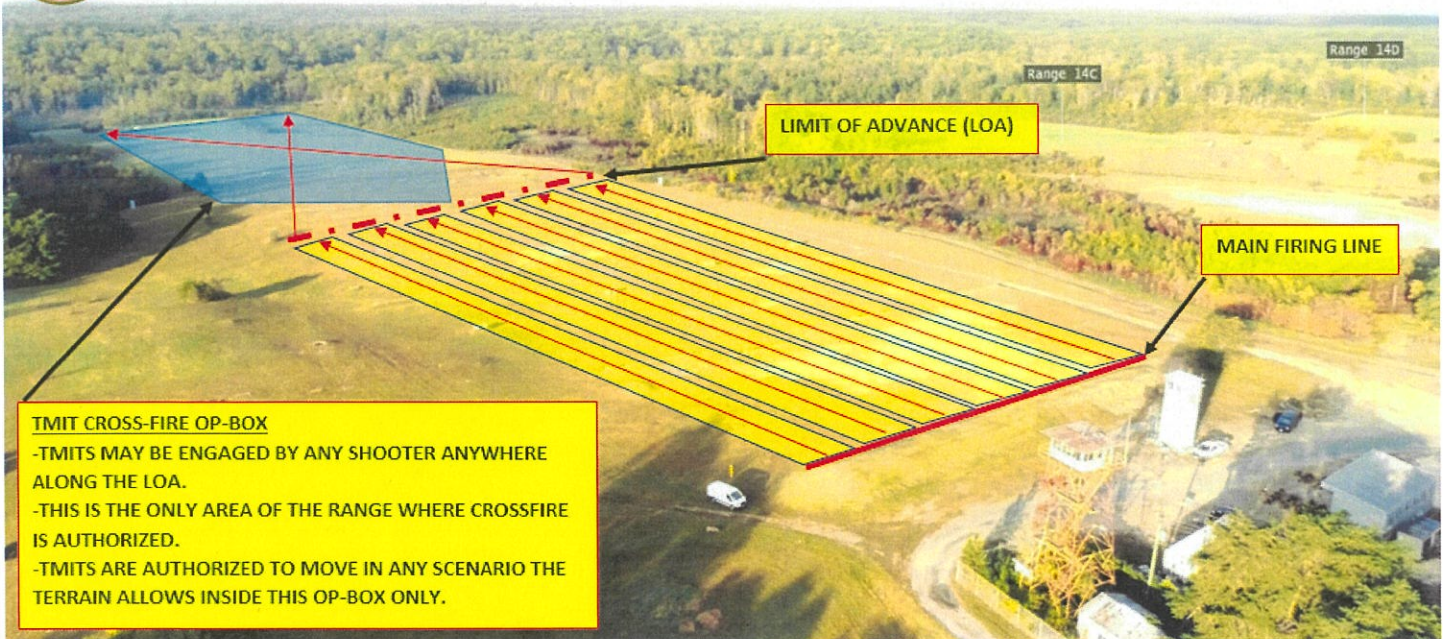


Figure-6

G. RANGE USE SPECIAL INSTRUCTIONS:

1. All range regulations and this SOP will be strictly adhered to.
2. The only weapons and ammunition approved for use on this range are listed in this SOP and in RFMSS. There must be no deviation from or modification to the approved weapons and ammunition.
3. The OIC and RSO must be present during firing.
4. Ensure range flags are posted, entry points are secured/manned, ear protection is worn (eye protection for SRT), safety brief is given, Range Control contacted, and all fires are directed between the left and right lateral limits markers (black and white striped).
5. Crossfire is not authorized from anywhere in the movement box between the Main Firing Line and the LOA as shown in Figure-2.
6. Crossfire is authorized from the LOA into the TMIT Op-Box shown in Figure-6 ONLY.
7. This range has internal conflicts and external conflicts with neighboring range, surrounding Training Areas (TAs) and roads that will prevent access to those areas from internal RTA roads. (Figure-3)

-Internal Conflicts: Static Events

- All live fire closes TA12A and TA11B.
- All live fire restricts air ops in LZ Oriole
- All live fire closes access to road 644 that runs parallel to the range.

-External Conflicts: Fire and Movement and TMIT events

-Live Fire and Movement conflicts with Range 14C. Movement on Range 14C down range or forward of the B/W barber poles marking the stop fire line of the 100m box is prohibited. Figure-3.

-TMIT Events conflict with Range 14C, close TA12B, and restrict access to Rd. 618 from Blackrock Rd. North from the 618E gate.

8. Firing from the observation tower or bleachers is prohibited.

9. All brass, trash, targets, and materials will be removed completely at the end of training by the using unit. This includes any materials used to emplace targets or stage ammo such as pallets in the Roll-up.

10. Fire and **movement** (rushes) is authorized. Fire and **maneuver** is not authorized.

11. Units that do not occupy their range within two hours of their scheduled occupy time will lose the use of that range for that day.

12. Units that have requested contractor support (PITS targets, TMITs, battlefield effects simulators, etc.) that are not present on the specified range within 1 hour of the requested time and have not contacted RMB/TSCQ will forfeit all contracted support for the day.

13. Units that have occupied a range with approved contractor support and that have not begun to use that support within 2 hours of the requested hour of operation will forfeit all contracted support for the day.

14. Units that are training with contractor support that place themselves voluntary into check fire for 2 hours during the approved support operational hours will forfeit all support for the day.

NOTE: Units that encounter situations where contractor support (automated targets, PITS targets, battlefield effects simulators, etc.) is delayed or interrupted by circumstances beyond the control of the requesting unit (RMB directed check fire, ASP support, MEDEVAC, etc.) must contact a government representative (SSO or Fire Desk) to arrange continued support within the scope of the contract and available assets.

15. If battle effect simulators are to be used on this range, qualified personnel trained on the systems must be present.

H. APPLICABLE MAP SHEET. All grid coordinates listed in this order apply to the Quantico Military Installation Map V834S Edition 5-NGA 1:25,000

I. FACILITIES

Towers: 1

Sheds: 1

Ammo Breakdown: 1

Parking: Yes

Description of Other Structures: (1) Covered bleachers and (1) battery charging station

J. UTILITIES AVAILABLE

Electricity: Yes

Lights: Yes

Water System: None

K. INSTALLED COMMUNICATIONS. None

L. MEASURED DISTANCES

	<u>MILES</u>	<u>MGRS</u>
Range Control	8.0	87406360
TBS	7.5	87106390
WTBN	4.5	87806740
ASP	6.0	91256605
EMT/Fire (Fire House 3)	4.5	89606710
Main side Gate	8.0	94406440
Camp Upshur	5.5	80007850
Nearest MEDEVAC LZ	0.0	88207310 (LZ Oriole)

Directions to MEDEVAC LZ: MEDEVAC LZ is located 50 meters to the left of Range 14.

NOTE: The actual location of the MEDEVAC LZ will be determined by Quantico Fire and Emergency Services at the time of the emergency. LZ listed here is for reference only.

M. AVAILABLE DAYS/HOURS: 362 Days. 0500-2359. All other times require special permission from Range Control.

N. AREA SUITABILITY:

<u>Unit Type</u>	<u>Unit Size</u>	<u>Number of Units</u>
Combat Arms	Squad	1

O. GEOGRAPHICAL DATA:

Access Routes: MCB 1

Soil Type: Dirt

Terrain Type: Small rolling hills

Vegetation: Grass/Woodland

P. COMMUNICATION REQUIREMENTS:

1. A radio check is required immediately upon occupying any portion of the RTA, every 30 minutes at top/bottom of the hour in a live fire status and every 3 hours top of the hour in a non-live fire status.
2. The Range Control Facility (RCF) Fire Desk Safety Net call sign is "Range Control". Your call sign is "**RANGE FOURTEEN**".
3. The Primary means of communication with the RCF (Fire Desk) on the Safety Net is via the ELMR Radio provided to OIC/RSO at time of check out on the talk group "RC Safety" (ground) and 134.1 VHF (air).
4. The Secondary means of communication with the RCF (Fire Desk) on the Safety Net is via the OIC/RSO Cell Phone to: 703-784-5321 or 5322. Cell phone number is verified at time of occupation.

5. OIC/RSO will monitor the RCF Primary and Secondary Safety Nets at all times. Instant communication is required.
6. Any unit with organic ELMR radios will have the "RC Safety" talk group programed in and use those radios as their primary means of communication within the RTA.
7. Units without organic ELMR assets will be issued ELMR radios from RMB when checking out the range.
8. Approved Non-ELMR radios are only authorized for internal communication (ground).
9. If the RCF cannot reach a unit within the RTA via primary communication, the unit will be contacted via the secondary means of communication.
10. Upon loss of primary communication the OIC/RSO will initiate a "check fire"/cease training status and will contact the RCF via secondary communication. This communication will be maintained while primary communication is being restored. Units may only resume firing/training once primary communication has been re-established and clearance is granted by the RCF.
11. OIC/RSO will comply with all guidance and commands given by the RCF.

Q. INJURY CLASSIFICATIONS:

Injuries are classified into the following categories in order to aid in casualty evacuation from the RTA.

1. **ROUTINE**. Routine injuries are those injuries that are not threatening to life, limb or eyesight; and conditions or illnesses treatable by medication or procedures available at the base medical facilities.
2. **PRIORITY**. Priority injuries are those injuries that require immediate medical attention but are not threatening to life, limb, or eyesight if treated promptly.
3. **URGENT**. Urgent injuries are severe injuries that are threatening to life, limb, or eyesight and require immediate medical attention.
4. **MASS CASUALTY**. A mass casualty is a series of injuries with multiple priority and urgent medical patients.

R. MEDICAL EVACUATION (MEDEVAC) PROCEDURES:

1. Injury occurs.
2. Range will immediately cease fire.
3. Medical support evaluates/treats injured personnel.
4. Range OIC/RSO notifies the RCF of the injury, is the victim conscious/unconscious and what type of MEDEVAC transportation is requested (ground/air).
5. The OIC/RSO must maintain constant radio contact with Range Control and awaits further instructions.



INSTALLATION RANGE SAFETY OFFICER

DATE: 23 July 2024