

RANGE 14C

SOP

RANGE DESCRIPTION

- Range 14C is an active small arms range supporting static direct fire from ground and elevated positions located at Grid 87507350.
- Accessible from MCB-1 and is secured by a gate that will be kept closed/locked or closed/manned while hot.
- From the Tower:** Principal direction of fire is between (L) 236° to (R) 265° Grid. Figure-1.
- There are 12 stationary firing ports on the second, fourth, and sixth floors for 1 shooter each. Figures-1 and 4.
- There are 12 stationary firing points for 2 shooters each on the roof top. Figures-1 and 4.
- Paper, plastic, or wood framed targets may be placed in the Sandbox for close-in/high-angle engagements.
- Steel Reactive Targets (SRT) are not authorized in the Sandbox. Figures-1 and 5.
- SRT must be placed according to the minimum engagement distances listed in paragraph (E).
- Trackless Mobile Infantry Targets (TMITs) are authorized on this range but must be engaged according to paragraph (F) and Figures-2 and 3. TMITs are not authorized into the Sandbox.
- From the 100m Firing Box:** Principal direction of fire is 239° grid. Figure-1.
- Up to 40 firing positions in a 130m wide by 100m deep firing box. (LIMITED BY TERRAIN AND OBSTACLES)
- Paper, plastic, or wood framed targets are authorized in this firing box.
- TMITs are authorized for this range but will not be engaged from the firing box (Figure-3 and paragraph (F)).

Primary Use: Marine Corps Embassy Security Group (MCESG) and the Marine Security Augmentation Unit (MSAU) training. MCESG and MSAU have Priority of Use for this range. Use of the Tower requires prior coordination with and approval from MCESG by contacting MCESG Operations at (703) 784-4863.

Alternate Uses:

- Multi-purpose small arms range for Squad sized elements firing in the defense.
- High-angle firing at close range and distances to 300m.
- Short range marksmanship training and zeroing to 100m.

NOTES:

- OIC/RSO will need the key to the Range 14C gate to access this range.
- OIC/RSO will ensure the gate is **Closed and Locked or Closed and Manned** when live fire is in progress.
- The barrier behind the tower on the gravel road leading to Range 14 will be in place during live fire.
- When firing from the Tower, only one floor or the roof will be occupied and fired from at any one time.
- Targets must be placed in the Sandbox for close range/high-angle firing from any floor or roof of the Tower.
- Use of the Trackless Mobile Infantry Targets (TMITs) is authorized on this range with restrictions.
- Access to the tower must be coordinated with MCESG prior to submitting a request in RFMSS.
- Storage in the tower is specifically for MCESG and MSAU only.

Conflicts: Details found in Figure-2 and paragraph (G.2).

- Range 14 conflicts with this range. Down range access beyond the forward edge of the Sandbox is restricted.
- Check the Range Facility Management Support System (RFMSS) for applicability.
- Simultaneous firing from the Tower and the 100m Box is prohibited.
- All movement forward of the Tower is prohibited while firing from the Tower is in progress.
- Range 14C and Range 14D conflict with each other. Down range movement on Range 14D beyond the forward edge of the movement box is prohibited while 14C is hot. 14D conflicts with the down range area of 14C, target placement must be coordinated between both OIC's. See Figure-2.



Range 14C Tower, Sandbox, and 100x130m Firing Box

- A: TOWER CAN BE OCCUPIED BUT NOT ACTIVELY FIRING WHILE THE 100m BOX IS OCCUPIED AND/OR FIRING.
- A: TOWER SUPPORTS FIRING CALIBERS UP TO AND INCLUDING .338 LAPUA MAG/NORMA MAG.
- B: TARGETS PLACED IN THE SAND BOX ARE LIMITED TO PLASTIC, PAPER, AND WOOD FRAMED.
- B: METAL TARGET STANDS ARE AUTHORIZED.
- B: SRT, TIMITS, AND PITS TARGETS ARE NOT AUTHORIZED IN THE SANDBOX. CLOSE PROXIMITY TO THE TOWER, RICOCHETS MAY CAUSE DAMAGE. SEE MINIMUM STANDOFFS IN PARAGRAPH (E).
- C: THE FIRING BOX WILL NOT BE OCCUPIED OR HOT WHILE THE TOWER IS ACTIVELY FIRING.
- C: FIRING BOX SUPPORTS FIRING UP TO 7.62mm IN THE FULL DEPTH OF 100m.
- C: FIRING BOX SUPPORTS FIRING .300 WM/NM AND .338 LM/NM FROM THE MAIN FIRING LINE ONLY.

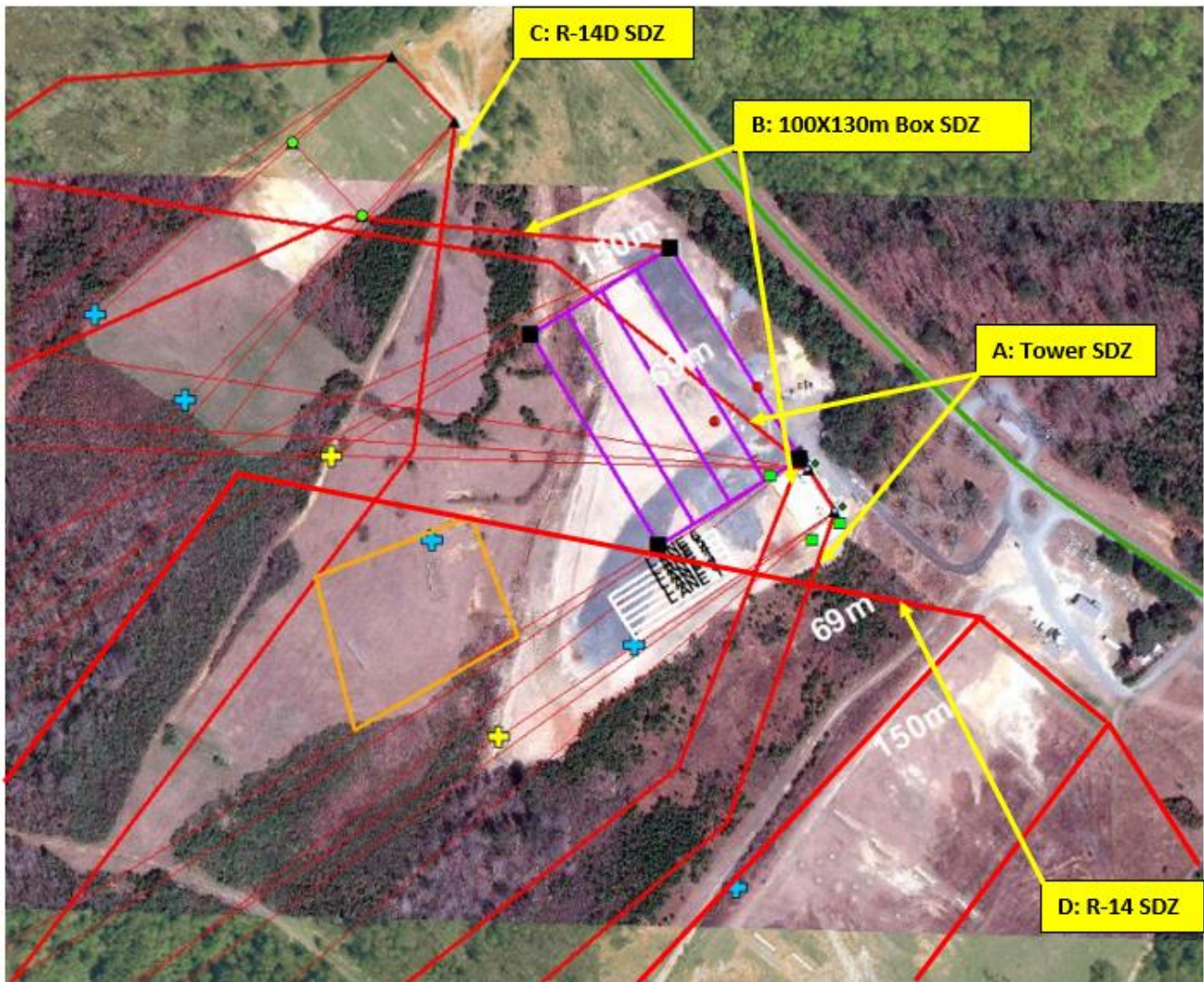
Figure-1

A. WEAPONS ACCOMMODATED: Detailed list is maintained in RFMSS.

- Service Rifles, Shotguns, and Pistols
- Sniper Rifles
- Approved Foreign Weapons
- Approved hand-held Grenade launchers
- Light and medium machine guns
- Approved automatic rifles
- Approved Non-Lethal Weapons

B. AMMUNITION AUTHORIZED: Detailed list is maintained in RFMSS.

- Shotgun (All)
- Pistol (All)
- 5.56mm (All)
- 7.62mm, 7.62mm Special Ball, 7.62x39mm, 7.62x54mm
- .300 WinMag/Norma Mag (Main firing line of Firing Box and Tower only)
- .338 Lapua Mag/Norma Mag (Main firing line of Firing Box and Tower only)
- Hand Grenades and 40mm Grenades (Practice/Illum/Non-Lethal only)
- Pyro and illum are authorized when Fire Danger Conditions allow.



Range Conflicts




- A: THE SDZ FOR THE TOWER CONFLICTS WITH THE 100m BOX. SIMULTANEOUS FIRING IS NOT AUTHORIZED.
 - B: THE SDZ FOR THE 100m BOX CONFLICTS WITH THE SANDBOX AND RANGE 14D. PERSONNEL ARE NOT ALLOWED FORWARD OF THE TOWER (INDICATED BY THE ) NOR THE FORWARD EDGE OF THE MOVEMENT BOX ON 14D (INDICATED BY THE ) WHEN THE 100m BAY IS ACTIVELY FIRING.
 - C: THE SDZ FOR RANGE 14D CONFLICTS WITH DOWN RANGE MOVEMENT ON 14C. TARGET PLACEMENT IN THIS AREA MUST BE COORDINATED WITH THE OIC'S OF BOTH RANGES AND RANGE CONTROL.
 - D: RANGE 14 CONFLICTS WITH RANGE 14C DOWN RANGE OF THE 100m BOX (INDICATED BY THE ) . MOVEMENT OF PERSONNEL TO INCLUDE TARGET PLACEMENT MUST BE COORDINATED WITH RANGE 14 AND RANGE CONTROL.
- NOTE: THE PURPLE LINES IN THE 100m BOX INDICATE 25m INCREMENTS.
- NOTE: THE 69m AND 150m INDICATORS SHOW THE MINIMUM SAFE STANDOFF (LATERALLY) FOR SRT AND TMIT TARGETS.

Figure-2



Left/Right Lateral Limits, Trackless Mobile Infantry Target (TMIT) Op-Boxes, and Firing Box

- A: LEFT LATERAL LIMIT (LLL) GRID: 185TH8756773035 (BLACK/WHITE STRIPED SIGN).**
- B: RIGHT LATERAL LIMIT (RLL) GRID: 185TH8744873171 (BLACK/WHITE STRIPED SIGN). (MAY BE OBSCURED BY TREES)**
- C: 100m X 130m FIRING BOX: MARKED BY RED/YELLOW BARBER POLES. (RLL MAY BE OBSCURED FROM VIEW ON FAR RIGHT)**
 - START FIRING LINE: LEFT UPPER CORNER: 185TH8774973203/RIGHT UPPER CORNER: 185TH8768173314
 - STOP FIRING LINE: LOWER LEFT CORNER: 185TH8766473151/LOWER RIGHT CORNER: 185TH8759673261
 - NOTE: SOME OF THE POSITIONS MAY NOT ALLOW FULL USE OF THE 100M DEPTH DUE TO TERRAIN OR OBSTACLES.
- D: TMIT OP-BOX-1 (LANES): L/RLL IS THE WIDTH OF THE SANDBOX. FIGURE-4/FIGURE-5 AND PARAGRAPH (F.1).**
 - TMITS MUST BE ENGAGED IN THEIR RESPECTIVE LANES FROM THE TWO PORTS OR ROOF TOP POSITION ASSOCIATED WITH THAT LANE ONLY. (LANES ARE APPROXIMATELY 5m/16.5' WIDE).
 - CROSSFIRE IS NOT AUTHORIZED IN THIS OP-BOX.
 - TMITS ARE AUTHORIZED TO EXECUTE ANY SCENARIO THE LANE AND TERRAIN ALLOW.
 - TMITS ARE NOT AUTHORIZED TO BE IN THE SANDBOX OR CLOSER TO THE TOWER THAN THE STAND OFF DISTANCES LISTED IN PARAGRAPH (E) FOR THE CALIBER FIRED. 69m IS THE CLOSEST ALLOWABLE WITHOUT PRIOR COORDINATION.
- E: TMIT OP-BOX-2 DOWN RANGE: L/RLL ESTABLISHED BY THE TMIT ELECTRONIC FENCE NOT TO EXCEED THE RLL OF THE RANGE AS SHOWN ABOVE.**
 - TMITS WILL BE ENGAGED FROM THE TOWER ONLY.
 - CROSSFIRE IS AUTHORIZED IN THIS OP-BOX ONLY.
 - TMITS MAY EXECUTE ANY SCENARIO THE TERRAIN ALLOWS.
 - TMITS WILL NOT BE ENGAGED FROM THE FIRING BOX (C) OR FROM ANY OTHER GROUND POSITION.
- ADDITIONAL DETAILS ARE LISTED IN PARAGRAPH (F).**

Figure-3



Tower Firing Points and Special Instructions

- FIRING POINTS ARE NUMBERED LEFT TO RIGHT AS THEY FACE DOWN RANGE.
 - FIRING POINTS CORRESPOND TO TARGET POINTS IN THE SANDBOX TO THE DIRECT FRONT OF PORTS/ROOF POSITIONS.
 - FIRING POINTS CORRESPOND TO THE NUMBERED LANES FOR THE TMIT OP-BOX-1 IN FIGURE-3
 - STEEL REACTIVE TARGETS (SRT) AND TMITS ARE NOT AUTHORIZED IN THE SANDBOX FORWARD OF THE TOWER.
 - SANDBOX TARGETS ARE LIMITED TO PAPER, PLASTIC, AND WOOD FRAMED. METAL TARGET STANDS ARE AUTHORIZED.
 - SRT AND TMITS MUST BE PLACED/ENGAGED AT DISTANCES ESTABLISHED IN FIGURE 5 AND PARAGRAPH (E) OF THIS SOP.
 - SIMULTANEOUS FIRING FROM MULTIPLE LEVELS OR ROOF IN ANY MANNER IS PROHIBITED. SEE PARAGRAPH (G.2).
 - SIMULTANEOUS FIRING FROM THE TOWER AND FIRING BOX IS PROHIBITED.
 - ALL WINDOWS ON THE LOWER PORTS MUST BE CLOSED/SECURED BEFORE FIRING FROM A HIGHER LEVEL OR ROOF.
 - ALL WINDOWS ON THE PORTS AND ROOF TOP ACCESS MUST BE PROPERLY CLOSED/SECURED AT THE END OF TRAINING.
 - EXTERIOR LIGHTS MUST BE OFF AND "ROOF RED LIGHTS" TURNED ON AT THE END OF TRAINING.
 - OBSERVATION BY NON-PARTICIPATING PERSONNEL MUST BE DONE FROM AT OR ONE LEVEL HIGHER THAN THE FIRING.
 - EACH LANE DIRECTLY IN FRONT OF THE PAIR OF PORTS AND ROOF TOP POSITIONS IS 5m (~16.5 Ft) WIDE.
 - LANE 1: PORTS 1 AND 2/ROOF TOP POSITIONS 1 AND 2.
 - LANE 2: PORTS 3 AND 4/ROOF TOP POSITIONS 3 AND 4.
 - LANE 3: PORTS 5 AND 6/ROOF TOP POSITIONS 5 AND 6.
 - LANE 4: PORTS 7 AND 8/ROOF TOP POSITIONS 7 AND 8.
 - LANE 5: PORTS 9 AND 10/ROOF TOP POSITIONS 9 AND 10.
 - LANE 6: PORTS 11 AND 12/ROOF TOP POSITIONS 11 AND 12.
- NOTE: USE OF THIS TOWER BY ANY OTHER UNIT REQUIRES COORDINATION WITH THE MARINE CORPS EMBASSY SECURITY GROUP (MCESG) AT: (703) 784-4863.

Figure-4



Sandbox Special Instructions

- TARGETS ARE LIMITED TO PAPER, PLASTIC, AND WOOD FRAMED TARGETS.
- METAL TARGET STANDS ARE AUTHORIZED TO SUPPORT PAPER, PLASTIC, AND WOOD FRAMED TARGETS.
- STEEL REACTIVE TARGETS (SRT) ARE NOT AUTHORIZED IN THIS AREA.
- TRACKLESS MOBILE INFANTRY TARGETS (TMITS) ARE NOT AUTHORIZED IN THIS AREA.
- ALL SRT AND TMITS MUST NOT BE CLOSER TO THE FRONT OF THE TOWER THAN:
 - 150m WHEN 7.62mm AMMUNITION IS USED.
 - 69m WHEN 5.56mm AMMUNITION WITH STEEL PENETRATORS ARE USED.
 - 23m WHEN 5.56mm AMMUNITION WITH SOFT CORE PROJECTILES ARE USED.
- FIRING IN OR FROM THE SANDBOX IS PROHIBITED.
- SIMULTANEOUS FIRING FROM MULTIPLE LEVELS OR ROOF IN ANY MANNER IS PROHIBITED.
- ALL WINDOWS ON THE LOWER PORTS MUST BE CLOSED/SECURED BEFORE FIRING FROM A HIGHER LEVEL OR ROOF.
- ALL WINDOWS ON THE PORTS AND ROOF TOP ACCESS MUST BE PROPERLY CLOSED/SECURED AT THE END OF TRAINING.
- SIMULTANEOUS FIRING FROM THE TOWER AND FIRING BOX IS PROHIBITED.

Figure-5

C. LASERS AUTHORIZED: Class 1 – 3R. Standard aiming devices mounted on approved service rifles. Class 3B can be fired if safety filter is on, reducing power output.

D. TARGETS/SIMULATORS/DEVICES.

1. Portable Infantry Targets (PITS), Trackless Mobile Infantry Targets (TMITs), Steel Reactive Targets (SRTs), Training IED's, simulators, etc. are authorized for this range.
2. All targets and systems above must be coordinated through the Training Systems Support Desk (TSSD).
3. Additional targets are limited to paper, plastic, wood framed, and approved SRT.
4. Pallets and tires are not authorized targets or target reference points.

5. OIC/RSO must ensure all targets are placed and engaged from positions, so the gun-target lines and all rounds fired do not exceed the left and right lateral limits.
6. SRTs must be a minimum of 3/8" thick and constructed of AR-500 or greater steel and comply with SOUM 2-02 or MCO 3570.1D/DAPAM 385-63 when it is released and this SOUM rescinded.
7. Enhanced Performance Round (EPR) ammunition (M855A1/M80A1) is NOT authorized to be fired on SRTs, steel protective plates for Portable Infantry Targets (PITS), or TMITs.
8. SRT will be engaged according to the distances listed in paragraph (E).
9. SRT, PITs, and TMITs are not authorized in the Sandbox. Figure-5.
10. Contact Training Support Center (TSC) at (703)432-7026/7969 for target support or questions.

E. Minimum engagement distances for SRT and TMITs:

-Pistol:	7 meters
-Shotgun (bird/buck):	10 meters
-Shotgun (slug):	45 meters
-5.56mm (soft-core):	23 meters
-5.56mm (steel penetrator):	69 meters
-5.45mm:	69 meters
-7.62mm Ball/linked:	150 meters
-7.62mm Special Ball:	150 meters
-7.62x39mm/7.62x54mm:	150 meters
-.300 Win Mag/Norma Mag:	375 meters
-.338 Lapua Mag/Norma Mag:	375 meters

F. TRACKLESS MOBILE INFANTRY TARGETS (TMITs):

- TMITs are approved for this range and must be used in accordance with the following instructions and Figure-2, Figure-3, and Figure-4.
- TMITs may be engaged with rifle calibers from the Tower only using the minimum engagement distances listed in paragraph (E) above.
- TMITs will not be engaged from the 100m Firing Box.
- TMITs will not be engaged from the Sandbox.

1. Op-Box-1 Lanes: L/R Lateral Limits are the width of the Sandbox and Lanes are 5m (~16.5') wide.

- TMITs must be engaged in their respective lanes from the two ports or roof top position associated with that lane only. Figure-3 and Figure-4.
- Cross fire is not authorized in this Op-Box.
- TMITs are not authorized to be in the sandbox or closer than 69m from the front of the tower without prior coordination with the Installation Range Safety Officer (IRSO).
- Lanes correspond to the following Tower firing positions:
 - Lane 1: Ports 1 and 2 and Roof Top positions 1 and 2.
 - Lane 2: Ports 3 and 4 and Roof Top positions 3 and 4.
 - Lane 3: Ports 5 and 6 and Roof Top positions 5 and 6.
 - Lane 4: Ports 7 and 8 and Roof Top positions 7 and 8.
 - Lane 5: Ports 9 and 10 and Roof Top positions 9 and 10.
 - Lane 6: Ports 11 and 12 and Roof Top positions 11 and 12.
- TMITs are authorized to execute any scenario the terrain allows within each lane.
- TMITs must stay in their perspective lane.
- Multiple TMITs are authorized in each lane.

2. Op-Box-2 Down Range:

- TMITs may be engaged in this box from any firing position in the Tower only. Figure-3 and Figure-4.
- TMITs will not be engaged from the Firing Box or the ground.
- TMITs are authorized to execute any scenario the terrain allows within this Op-Box.
- TMITs must remain inside this Op-Box when being engaged. If they are relocating to Op-Box-1, they must do so administratively and not while firing is in progress.
- Crossfire is authorized from the Tower into this Op-Box only.

3. Minimum Engagement Distances (Stand Off) for TMITs:

- Use the minimum engagement distances in paragraph (E) above.
- These distances also apply laterally to the TMIT and caution must be exercised when personnel on this range or adjacent ranges are in proximity.

G. RANGE USE SPECIAL INSTRUCTIONS:

1. All range regulations and this SOP will be strictly adhered to.
2. This range has internal conflicts and shares external conflicts with Range 14 to the southeast and Range 14D to the northwest (Figure-2):

-Internal Conflicts:

- SDZ from the Tower conflicts with the Firing Box, simultaneous firing is prohibited.
- SDZ from the Firing Box conflicts with the Sandbox, personnel are not authorized forward of the Tower when the Firing Box is actively hot.
- Firing of .300 Win Mag/Norma Mag and .338 Lapua Mag/Norma Mag from any other positions other than the Tower and main firing line of the Firing Box is prohibited. Figure-3.

-External Conflicts:

- Downrange movement on this range forward of the Sandbox (Figure-5) is prohibited when Range 14 is hot.
- Downrange movement on this range forward of the terrain drop-off is prohibited when Range 14D is hot. Figure-3
- The SDZ for the 100m Firing Box conflicts with Range 14D, personnel are not authorized beyond the markers on forward edge of the movement box on Range 14D when the Firing Box is actively hot. Figure-2.
- Range 14C does not conflict with Range 14 when this SOP is followed.

3. The only weapons and ammunition approved for use on this range are listed in this SOP and in RFMSS. There must be no deviation from or modification to the approved weapons and ammunition.
4. The OIC and RSO must be present during firing.
5. Ensure range flags are posted, gates are secured/locked or secured/manned, ear protection is worn (eye protection for SRT), safety brief is given, Range Control contacted, and all fires are directed between the left and right lateral limits markers (black and white striped).
6. Firing from the Sandbox and/or berms is prohibited.

7. Targets are limited to paper, plastic, wood framed, SRT, and TMITs. No other targets will be used such as tires, pallets, bowling pins, clay targets, cans, etc.
8. SRTs will be placed and engaged IAW paragraph (E) and SOUM 2-02 or MCO 3570.1D/DAPAM 385-63 when it is released and this SOUM rescinded.
9. All brass, trash, targets, and materials will be removed completely at the end of training by the using unit. This includes any materials used to place targets on or stage ammo such as pallets.
10. Personnel on Range 14 (left) and Range 14D (right) will always be kept in observation when Range 14C is hot.
11. Firing on the move is authorized on the right side of the range in the 100m box and will be in accordance with Figure-2 and Figure-3.
12. Units that do not occupy their range within two hours of their scheduled occupy time will lose the use of that range for that day.
13. Units that have requested contractor support (PITS targets, TMITs, battlefield effects simulators, etc.) that are not present on the specified range within 1 hour of the requested time and have not contacted RMB/TSCQ will forfeit all contracted support for the day.
14. Units that have occupied a range with approved contractor support and that have not begun to use that support within 2 hours of the requested hour of operation will forfeit all contracted support for the day.
15. Units that are training with contractor support that place themselves voluntary into check fire for 2 hours during the approved support operational hours will forfeit all support for the day.
16. Units that encounter situations where contractor support is delayed or interrupted by circumstances beyond the control of the requesting unit (RMB directed check fire, ASP support, MEDEVAC, etc.) must contact RMB/TSCQ to arrange continued support within the scope of the contract and available assets.

H. APPLICABLE MAP SHEET. All grid coordinates listed in this order apply to the Quantico Military Installation Map V834S Edition 5-NGA 1:25,000

I. FACILITIES

Towers: 1

Sheds: 1

Ammo Breakdown: 0

Parking: Limited

Description of Other Structures: (3) Porta-Johns

J. UTILITIES AVAILABLE

Electricity: Yes

Lights: Interior and Exterior

Water System: None

K. INSTALLED COMMUNICATIONS. None

L. MEASURED DISTANCES

	<u>MILES</u>	<u>MGRS</u>
Range Control	8.0	87406360
TBS	7.5	87106390
WTBN	4.5	87806740
ASP	6.0	91256605
EMT/Fire (Fire House 3)	4.5	89606710
Mainside Gate	8.0	94406440
Camp Upshur	5.5	80007850
Nearest MEDEVAC LZ	0.0	88207310 (LZ Oriole)

Directions to MEDEVAC LZ: Exit Range 14C, turn right, go 200 yards, LZ is on the right next to MCB-1.

M. TOWER OPERATIONS: Lighting

NOTE: White lights on Tower roof operate on a photocell and will function dusk to dawn when switched on.



Tower Operation Special Instructions

- USE OF THE TOWER BY UNITS OTHER THAN MCE5G MUST BE COORDINATED WITH MCE5G OPERATIONS AT (703)-784-4863.
- KEYS ARE REQUIRED TO ACCESS THE TOWER.
- MAIN ENTRY IS THROUGH THE DOOR ON THE REAR EAST SIDE OF THE TOWER CLOSEST TO RANGE 14.

ELECTRICAL PANELS

- THE MAIN ELECTRICAL PANEL IS LOCATED ON THE EXTERIOR WEST SIDE OF THE TOWER AND ACCESSED BY QUALIFIED MAINTENANCE PERSONNEL ONLY.
- PANEL-A AND PANEL-B ARE LOCATED INSIDE LEFT OF THE MAIN ENTRY DOOR.
- PANEL-A IS LOCKED AND ACCESSED BY QUALIFIED MAINTENANCE PERSONNEL ONLY.
- PANEL-B IS UNLOCKED AND CONTAINS ALL THE SWITCHES TO CONTROL THE LIGHTS AND VENTILATION.
- THERE ARE SWITCHES LOCATED ON EACH FLOOR.
- IF THE SWITCH IS ILLUMINATED, THE LIGHTS/VENTILATION ARE ON.
- ALL INTERIOR LIGHTS MUST BE TURNED OFF AT THE END OF TRAINING.
- ALL VENTILATION MUST BE TURNED OFF AT THE END OF TRAINING.
- THE EXTERIOR LIGHTS MARKED "SHOOTING BAY FLOOD LIGHTS" MUST BE TURNED OFF AT THE END OF TRAINING.
- THE ROOF RED LIGHTS MUST BE LEFT ON AT THE END OF TRAINING.
- EXTERIOR DOOR LIGHTS MAY BE LEFT ON.
- ANY ISSUES MUST BE REPORTED TO RMB IMMEDIATELY



Figure-6

N. TOWER OPERATIONS: Access, hatches, and brass collection

A



B



C



D



E



F



Tower Operation Special Instructions

A-HATCHES ON EACH FIRING LEVEL:

- EACH FIRING POINT HATCH IS SECURED BY (5) LATCHES.
- HATCHES MUST BE OPEN WHEN VENTILATION SYSTEM IS IN OPERATION.
- HATCHES WILL REMAIN OPEN VIA MAGNETIC LATCH.
- HATCHES ON LOWER LEVELS MUST BE SECURED WHEN FIRING FROM HIGHER LEVELS AND ROOF.
- HATCHES MUST BE PROPERLY SECURED AT THE END OF TRAINING

B-ROOF TOP ACCESS:

- ONLY ONE PERSON ON THE LADDER AT ONE TIME.
- ROOF HATCH MAY REMAIN OPEN DURING TRAINING.
- ROOF HATCH MUST BE KEPT CLOSED DURING INCLEMENT WEATHER.
- ROOF HATCH MUST BE SECURED AT THE END OF TRAINING.
- THE YELLOW SAFETY GATE MUST BE KEPT CLOSED AT ALL TIMES.

C/D/E/F- BRASS DRAINS:

- THE WHITE PVC PIPES ARE FOR BRASS ONLY. **NO TRASH/NO LIQUIDS!**
- ACCESSIBLE ON THE ROOF AND FLOOR OF EACH LEVEL AT TWO POINTS.
- ROOF TOP (D) MUST HAVE THE TOP REPLACED AT THE END OF TRAINING.
- SMALL OPENING ON THE FLOOR (E) FOR BRASS TO BE SWEEP INTO.
- BRASS WILL COLLECT IN THE BUCKETS (F) ON THE GROUND LEVEL JUST INSIDE THE STORAGE AREAS.
- ALL BRASS MUST BE COLLECTED AND REMOVED AT THE END OF TRAINING.
- THE BUCKET MUST BE IN PLACE AT THE END OF TRAINING.
- NO BRASS OR DUNNAGE OF ANY KIND MAY BE STORED.

Figure-7

O. AVAILABLE DAYS/HOURS: 362 Days. 0500-2359. All other times require waiver.

P. AREA SUITABILITY

<u>Unit Type</u>	<u>Unit Size</u>	<u>Number of Units</u>
Combat Arms	Squad	1

Q. GEOGRAPHICAL DATA

Access Routes: MCB 1

Soil Type: Dirt/Grass

Terrain Type: Small hills

Vegetation: Grass/Woodland

R. COMMUNICATION REQUIREMENTS:

1. A radio check is required immediately upon occupying any portion of the RTA, every 30 minutes at top/bottom of the hour in a live fire status and every 3 hours top of the hour in a non-live fire status.
2. The Range Control Facility (RCF) Fire Desk Safety Net call sign is "Range Control". Your call sign is **"RANGE 14 Charlie"**.
3. The Primary means of communication with the RCF (Fire Desk) on the Safety Net is via the ELMR Radio provided to OIC/RSO at time of check out on the talk group "RC Safety" (ground) and 134.1 VHF (air).
4. The Secondary means of communication with the RCF (Fire Desk) on the Safety Net is via the OIC/RSO Cell Phone to: 703-784-5321 or 5322. Cell phone number is verified at time of occupation.
5. OIC/RSO will monitor the RCF Primary and Secondary Safety Nets at all times. Instant communication is required.
6. Any unit with organic ELMR radios will have the "RC Safety" talk group programed in and use those radios as their primary means of communication within the RTA.
7. Units without organic ELMR assets will be issued ELMR radios from RMB upon check-in.
8. Approved Non-ELMR radios are only authorized for internal communication (ground).
9. If the RCF cannot reach a unit within the RTA via primary communication, the unit will be contacted via the secondary means of communication.
10. Upon loss of primary communication the OIC/RSO will initiate a "check fire"/cease training status and will contact the RCF via secondary communication. This communication will be maintained while primary communication is being restored. Units may only resume firing/training once primary communication has been re-established and clearance is granted by the RCF.

S. INJURY CLASSIFICATIONS:

Injuries are classified into the following categories to aid in casualty evacuation from the RTA.

1. **ROUTINE**. Routine injuries are those injuries that are not threatening to life, limb or eyesight; and conditions or illnesses treatable by medication or procedures available at the base medical facilities.
2. **PRIORITY**. Priority injuries are those injuries that require immediate medical attention but are not threatening to life, limb, or eyesight if treated promptly.
3. **URGENT**. Urgent injuries are severe injuries that are threatening to life, limb, or eyesight and require immediate medical attention.
4. **MASS CASUALTY**. A mass casualty is a series of injuries with multiple priority and urgent medical patients.

T. MEDICAL EVACUATION (MEDEVAC) PROCEDURES:

1. Injury occurs.
2. Range will immediately cease fire.
3. Medical support evaluates/treats injured personnel.
4. Range OIC/RSO notifies the RCF of the injury, is the victim conscious/unconscious and what type of MEDEVAC transportation is requested (ground/air).
5. The OIC/RSO must maintain constant radio contact with Range Control and awaits further instructions.

Martin W. Dankanich

INSTALLATION RANGE SAFETY OFFICER

DATE: 13 July, 2023