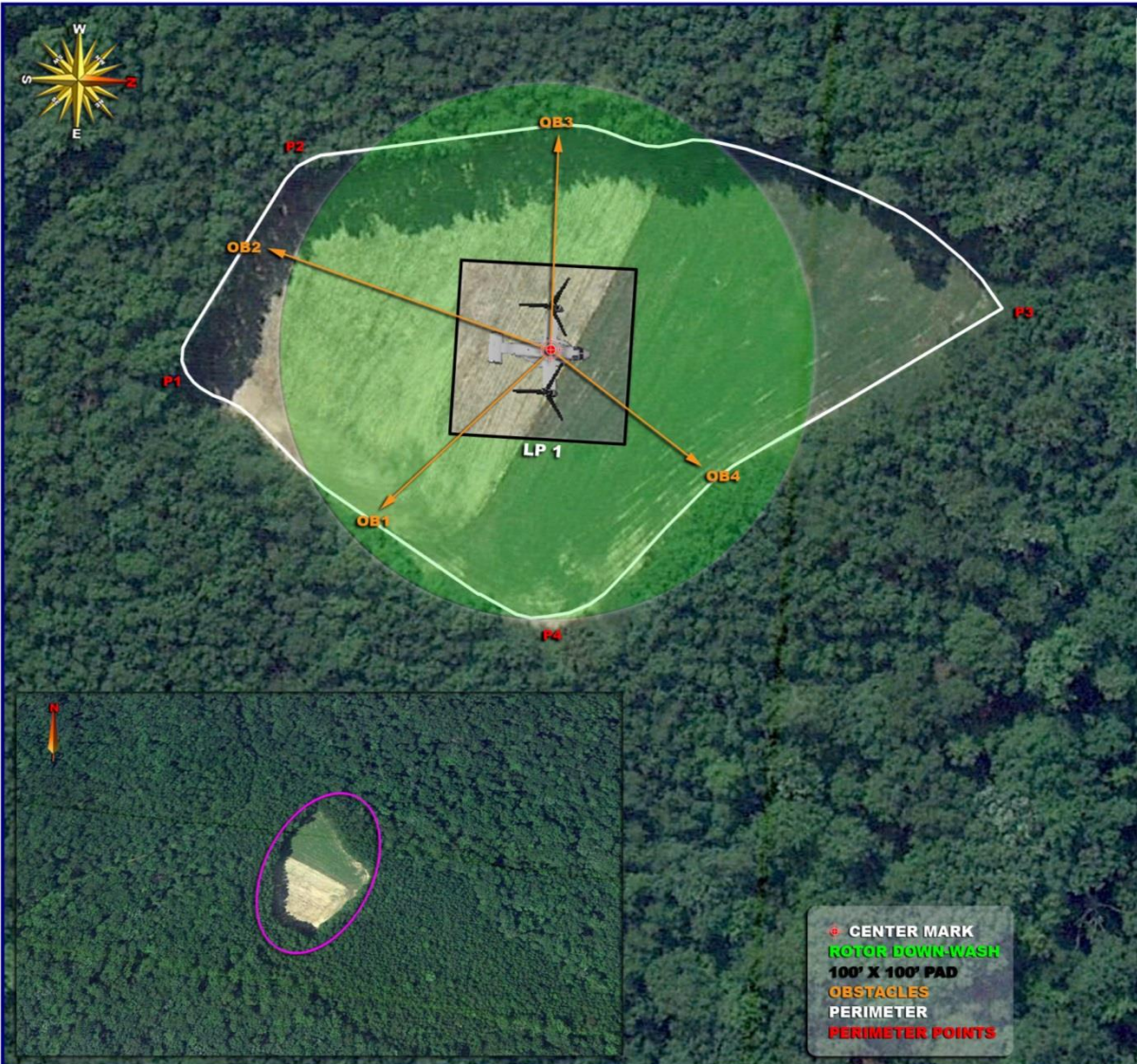


# LZ QUAIL

GRID: 832729

TA: 11A



Elevation m (ft)	LZ Qual Center		Slope Degrees	Slope Direction High to Low	Evaluation Adequate/Substandard/Inadequate
	Latitude	Longitude			
114.0 (374.0)	38°34'43.10"N	77°29'20.46"W	2.0	North to South	Substandard
Perimeter (P) Location					
Location	Latitude	Longitude	Location	Latitude	Longitude
P1	38°34'40.85"N	77°29'20.19"W	P3	38°34'45.37"N	77°29'21.00"W
P2	38°34'41.22"N	77°29'21.64"W	P4	38°34'42.86"N	77°29'18.51"W
Remarks					
1.	Surface conditions consist of loose dirt and grass up to 0.2 m (0.5 ft) tall throughout the LZ.				
2.	Large trees line the entire perimeter of the LZ.				
3.	Facility planners should coordinate with local command to determine utilization of LZ and size and/or improve LZ surface appropriately.				
Obstacle (OB) Location					
OB to LP	Type	Distance m (ft)	Height m (ft)	Width m (ft)	Depth m (ft)
OB1	Tree Line	41.1 (135.0)	18.3 (60.0)	74.7 (245.0)	
OB2	Tree Line	57.9 (190.0)	18.3 (60.0)	41.1 (135.0)	
OB3	Tree Line	36.6 (120.0)	18.3 (60.0)	121.9 (400.0)	
OB4	Tree Line	35.1 (115.0)	18.3 (60.0)	99.1 (325.0)	
Landing Point (LP) Location					
Location	Latitude	Longitude	Location	Latitude	Longitude
LP1	38°34'43.10"N	77°29'20.46"W			

\* CENTER MARK  
 ROTOR DOWN WASH  
 100' X 100' PAD  
 OBSTACLES  
 PERIMETER  
 PERIMETER POINTS

