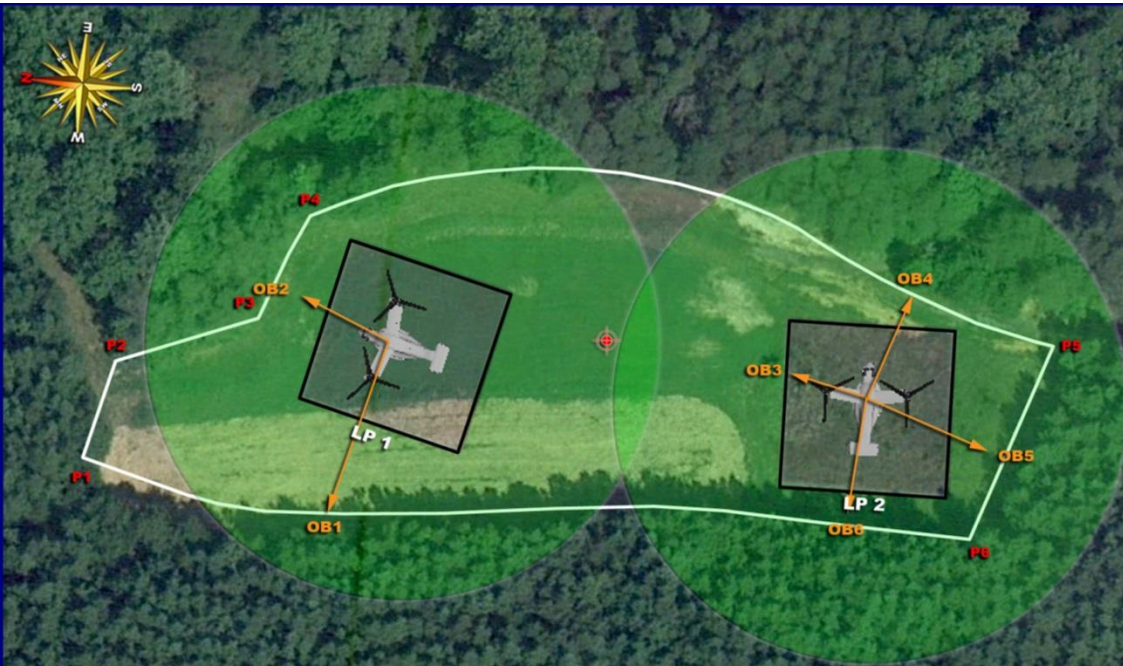


LZ MALLARD

GRID: 885695

TA: 11C



Elevation m (ft)	LZ Mallard Center		Slope Degrees	Slope Direction High to Low	Evaluation Adequate/Substandard/Inadeq/Not Eval
	Latitude	Longitude			
96.6 (317.0)	38° 32' 54.14" N	77° 25' 37.34" W	Multiple	See Remarks	Substandard
Perimeter (P) Location					
Location	Latitude	Longitude	Location	Latitude	Longitude
P1	38° 32' 57.17" N	77° 25' 38.79" W	P4	38° 32' 54.54" N	77° 25' 36.11" W
P2	38° 32' 57.05" N	77° 25' 37.96" W	P5	38° 32' 51.40" N	77° 25' 36.99" W
P3	38° 32' 56.19" N	77° 25' 37.49" W	P6	38° 32' 51.75" N	77° 25' 38.55" W
Remarks					
1.	Surface conditions consist of uneven terrain, loose dirt and grass up to 0.9 m (3.0 ft) tall throughout the LZ.				
2.	Large trees line the entire perimeter of the LZ.				
3.	The gravel road located north of LP 2 is approximately 0.9 m (3.0 ft) lower.				
4.	A small trench which runs east and west is located in the center of the LZ.				
5.	The northern portion of the LZ slopes 4.0 degrees toward the center and the southern portion of the LZ slopes 7.0 degrees toward the center of the LZ.				
6.	Facility planners should coordinate with local command to determine utilization of LZ and size and/or improve LZ surface appropriately.				
Obstacle (OB) Location					
OB to LP	Type	Distance m (ft)	Height m (ft)	Width m (ft)	Depth m (ft)
OB1-(LP1)	Tree Line	32.0 (106.0)	18.3 (60.0)	164.6 (540.0)	
OB2-(LP1)	Tree Line	22.9 (75.0)	18.3 (60.0)	73.2 (240.0)	
OB3-(LP2)	Tree	18.3 (60.0)	3.7 (12.0)	6.1 (20.0)	6.1 (20.0)
OB4-(LP2)	Tree Line	22.9 (75.0)	18.3 (60.0)	94.5 (310.0)	
OB5-(LP2)	Tree Line	27.4 (90.0)	18.3 (60.0)	51.8 (170.0)	
OB6-(LP2)	Tree Line	21.3 (70.0)	18.3 (60.0)	164.6 (540.0)	
Landing Point (LP) Location					
Location	Latitude	Longitude	Location	Latitude	Longitude
LP1	38° 32' 55.39" N	77° 25' 37.63" W	LP2	38° 32' 52.47" N	77° 25' 37.61" W



 **CENTER MARK**
 **ROTOR DOWN-WASH**
100' X 100' PAD
 **OBSTACLES**
PERIMETER
 **PERIMETER POINTS**

