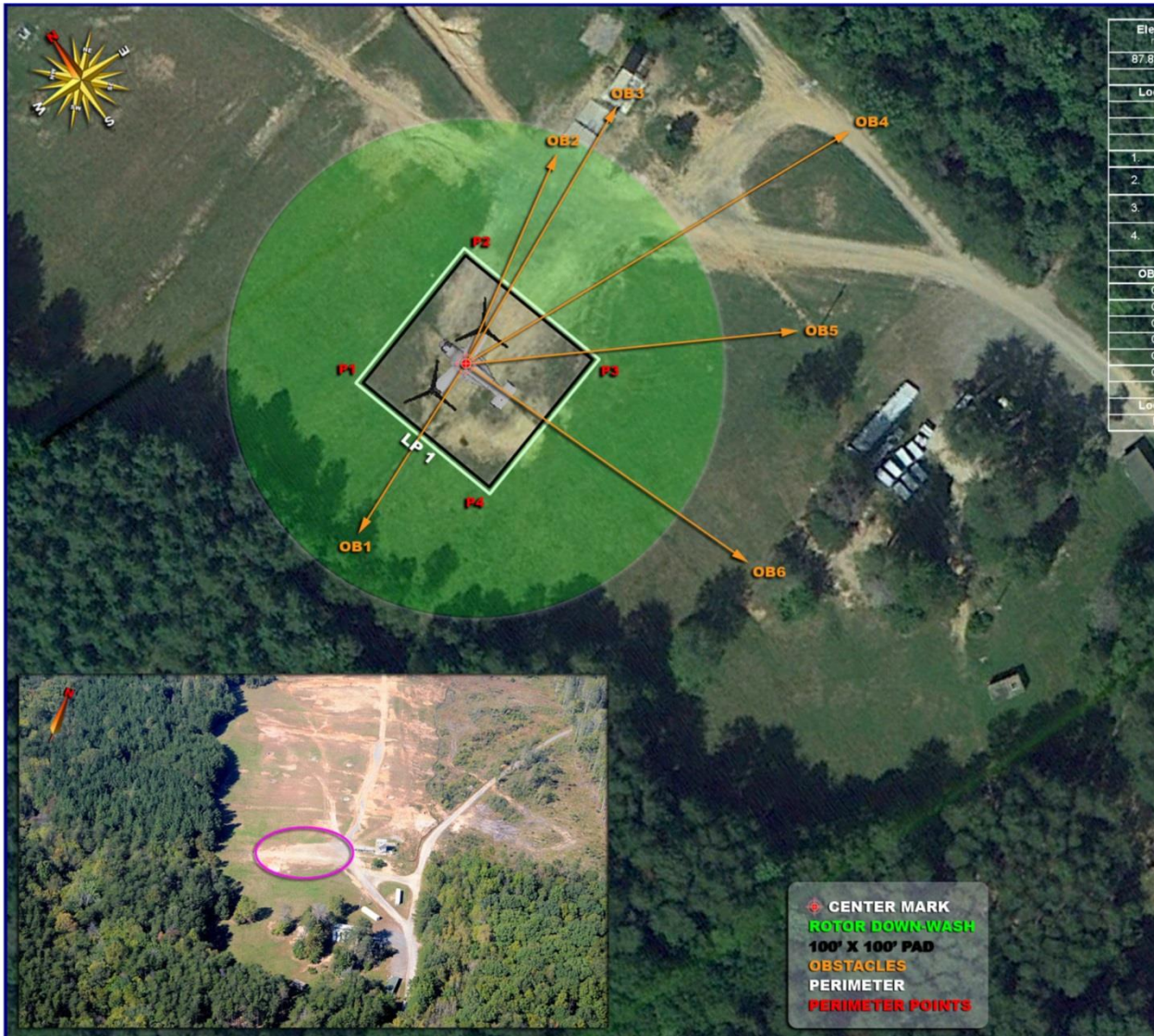


LZ LOON

GRID: 815654

TA: 9C



Elevation m (ft)	LZ Loon Center		Slope Degrees	Slope Direction High to Low	Evaluation Adequate/Substandard/Inadequate
	Latitude	Longitude			
87.8 (288.0)	38°30'30.59"N	77°30'19.79"W	< 1.0	N/A	Substandard
Perimeter (P) Location					
Location	Latitude	Longitude	Location	Latitude	Longitude
P1	38°30'30.88"N	77°30'21.07"W	P3	38°30'29.92"N	77°30'19.39"W
P2	38°30'30.97"N	77°30'19.75"W	P4	38°30'29.65"N	77°30'20.71"W
Remarks					
1.	Surface conditions consist of loose dirt, gravel and grass up to 0.2 m (0.5 ft) throughout the LZ.				
2.	The LZ sits on a small hill, the LP is fairly flat, however the LZ starts to slope downward at the northern and southern perimeters.				
3.	A civilian residential area is located approximately 518.2 m (1,700.0 ft) south of LZ center and should be considered when determining approach and departure patterns.				
4.	Facility planners should coordinate with local command to determine utilization of LZ and size and/or improve LZ surface appropriately.				
Obstacle (OB) Location					
OB to LP	Type	Distance m (ft)	Height m (ft)	Width m (ft)	Depth m (ft)
OB1	Tree Line	38.1 (125.0)	18.3 (60.0)	121.9 (400.0)	
OB2	Bleachers	45.7 (150.0)	3.7 (12.0)	6.1 (20.0)	9.1 (30.0)
OB3	Range Tower	57.9 (190.0)	15.2 (50.0)	6.1 (20.0)	6.1 (20.0)
OB4	Tree Line	88.4 (290.0)	18.3 (60.0)	36.6 (120.0)	
OB5	Telephone Pole	59.4 (195.0)	7.6 (25.0)	36.6 (120.0)	
OB6	Tree Line	64.0 (210.0)	12.2 (40.0)	61.0 (200.0)	
Landing Point (LP) Location					
Location	Latitude	Longitude	Location	Latitude	Longitude
LP1	38°30'30.59"N	77°30'19.79"W			



CENTER MARK
 ROTOR DOWN-WASH
 100' X 100' PAD
 OBSTACLES
 PERIMETER
 PERIMETER POINTS