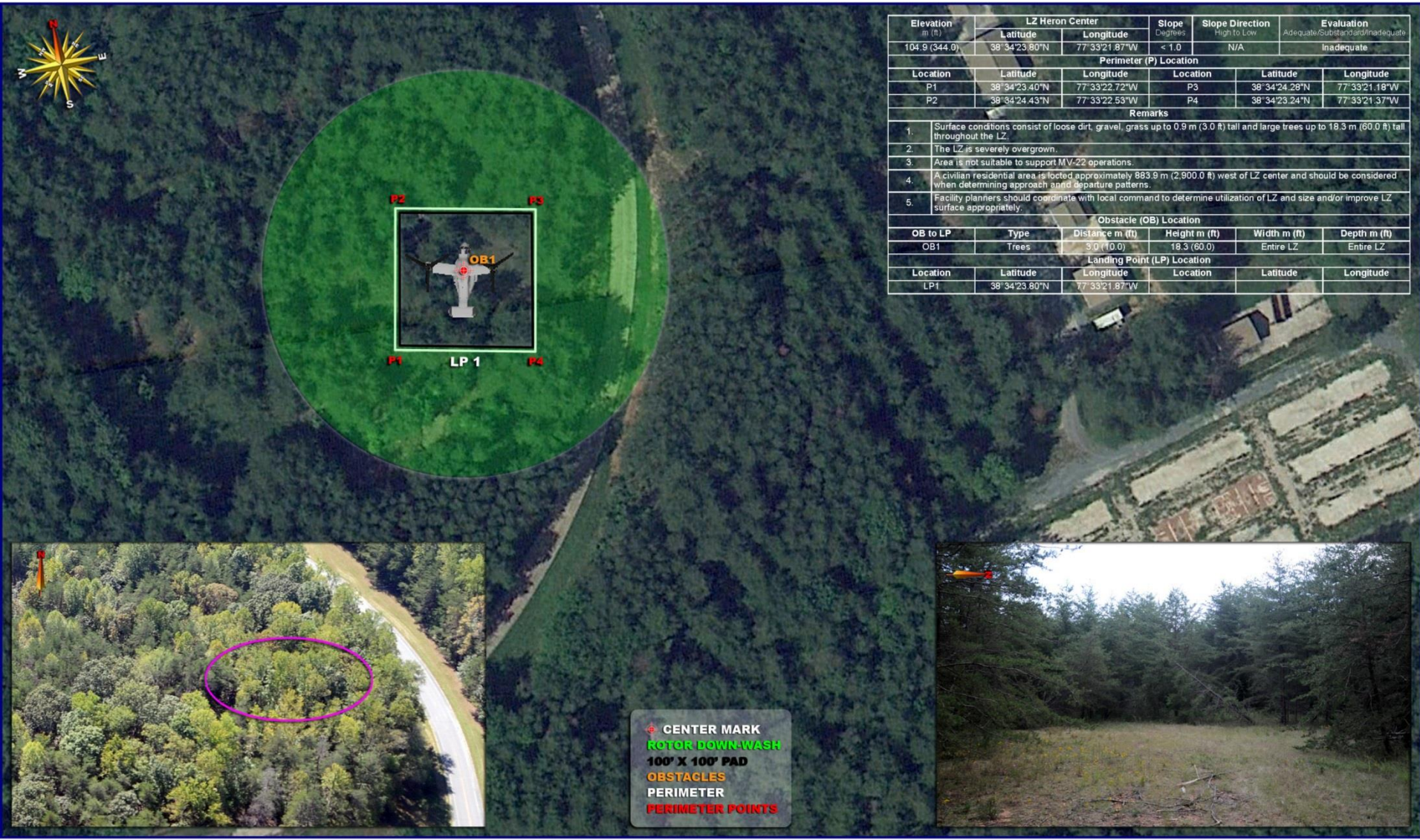


# LZ HERON

GRID: 773726

TA: 14B



Elevation m (ft)	LZ Heron Center		Slope Degrees	Slope Direction High to Low	Evaluation Adequate/Standard/Inadequate
	Latitude	Longitude			
104.9 (344.0)	38° 34' 23.80" N	77° 33' 21.87" W	< 1.0	N/A	Inadequate
Perimeter (P) Location					
Location	Latitude	Longitude	Location	Latitude	Longitude
P1	38° 34' 23.40" N	77° 33' 22.72" W	P3	38° 34' 24.28" N	77° 33' 21.18" W
P2	38° 34' 24.43" N	77° 33' 22.53" W	P4	38° 34' 23.24" N	77° 33' 21.37" W
Remarks					
1.	Surface conditions consist of loose dirt, gravel, grass up to 0.9 m (3.0 ft) tall and large trees up to 18.3 m (60.0 ft) tall throughout the LZ.				
2.	The LZ is severely overgrown.				
3.	Area is not suitable to support MV-22 operations.				
4.	A civilian residential area is located approximately 883.8 m (2,900.0 ft) west of LZ center and should be considered when determining approach and departure patterns.				
5.	Facility planners should coordinate with local command to determine utilization of LZ and size and/or improve LZ surface appropriately.				
Obstacle (OB) Location					
OB to LP	Type	Distance m (ft)	Height m (ft)	Width m (ft)	Depth m (ft)
OB1	Trees	3.0 (10.0)	18.3 (60.0)	Entire LZ	Entire LZ
Landing Point (LP) Location					
Location	Latitude	Longitude	Location	Latitude	Longitude
LP1	38° 34' 23.80" N	77° 33' 21.87" W			