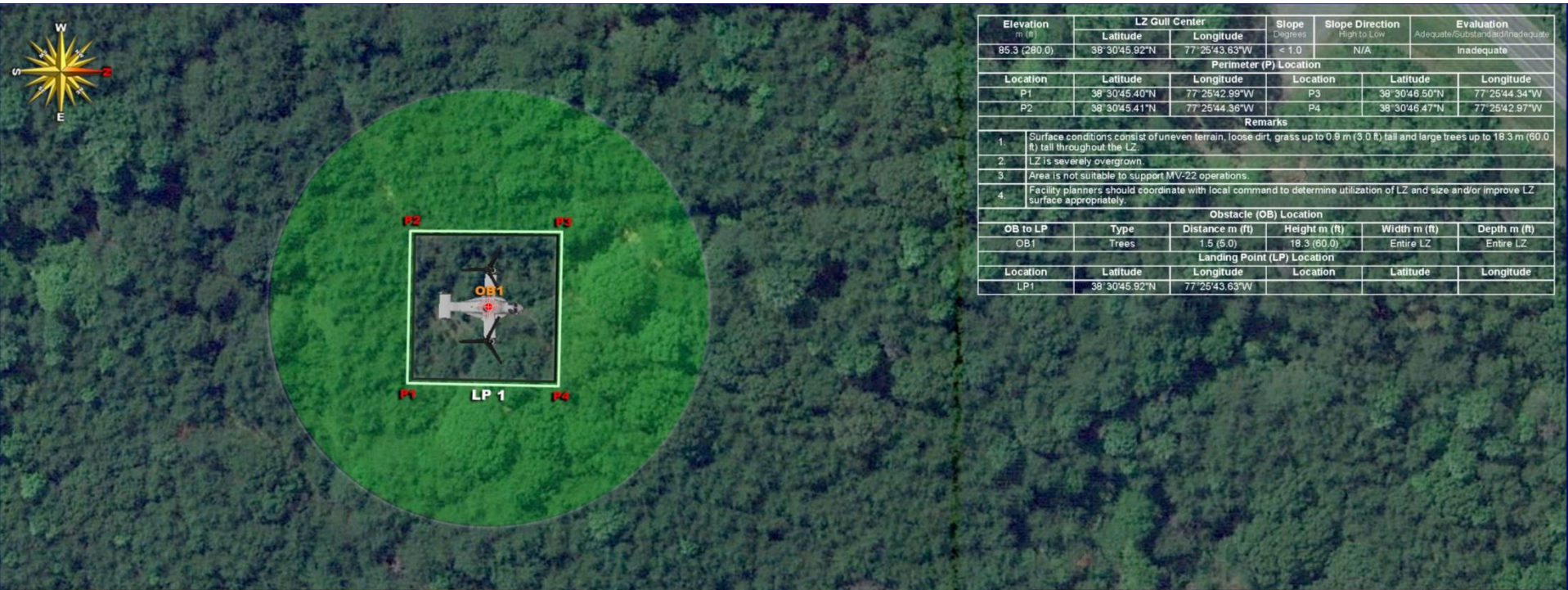


# LZ GULL

GRID: 883655

TA: 5A



Elevation m (ft)	LZ Gull Center		Slope Degrees	Slope Direction High to Low	Evaluation Adequate/Standard/Inadequate
	Latitude	Longitude			
95.3 (280.0)	38° 30'45.92"N	77° 25'43.63"W	< 1.0	N/A	Inadequate
Perimeter (P) Location					
Location	Latitude	Longitude	Location	Latitude	Longitude
P1	38° 30'45.40"N	77° 25'42.99"W	P3	38° 30'46.60"N	77° 25'44.34"W
P2	38° 30'45.41"N	77° 25'44.36"W	P4	38° 30'46.47"N	77° 25'42.97"W
Remarks					
1.	Surface conditions consist of uneven terrain, loose dirt, grass up to 0.9 m (3.0 ft) tall and large trees up to 18.3 m (60.0 ft) tall throughout the LZ.				
2.	LZ is severely overgrown.				
3.	Area is not suitable to support MV-22 operations.				
4.	Facility planners should coordinate with local command to determine utilization of LZ and size and/or improve LZ surface appropriately.				
Obstacle (OB) Location					
OB to LP	Type	Distance m (ft)	Height m (ft)	Width m (ft)	Depth m (ft)
OB1	Trees	1.5 (5.0)	18.3 (60.0)	Entire LZ	Entire LZ
Landing Point (LP) Location					
Location	Latitude	Longitude	Location	Latitude	Longitude
LP1	38° 30'45.92"N	77° 25'43.63"W			



+ CENTER MARK  
 ROTOR DOWN-WASH  
 100' X 100' PAD  
 OBSTACLES  
 PERIMETER  
 PERIMETER POINTS