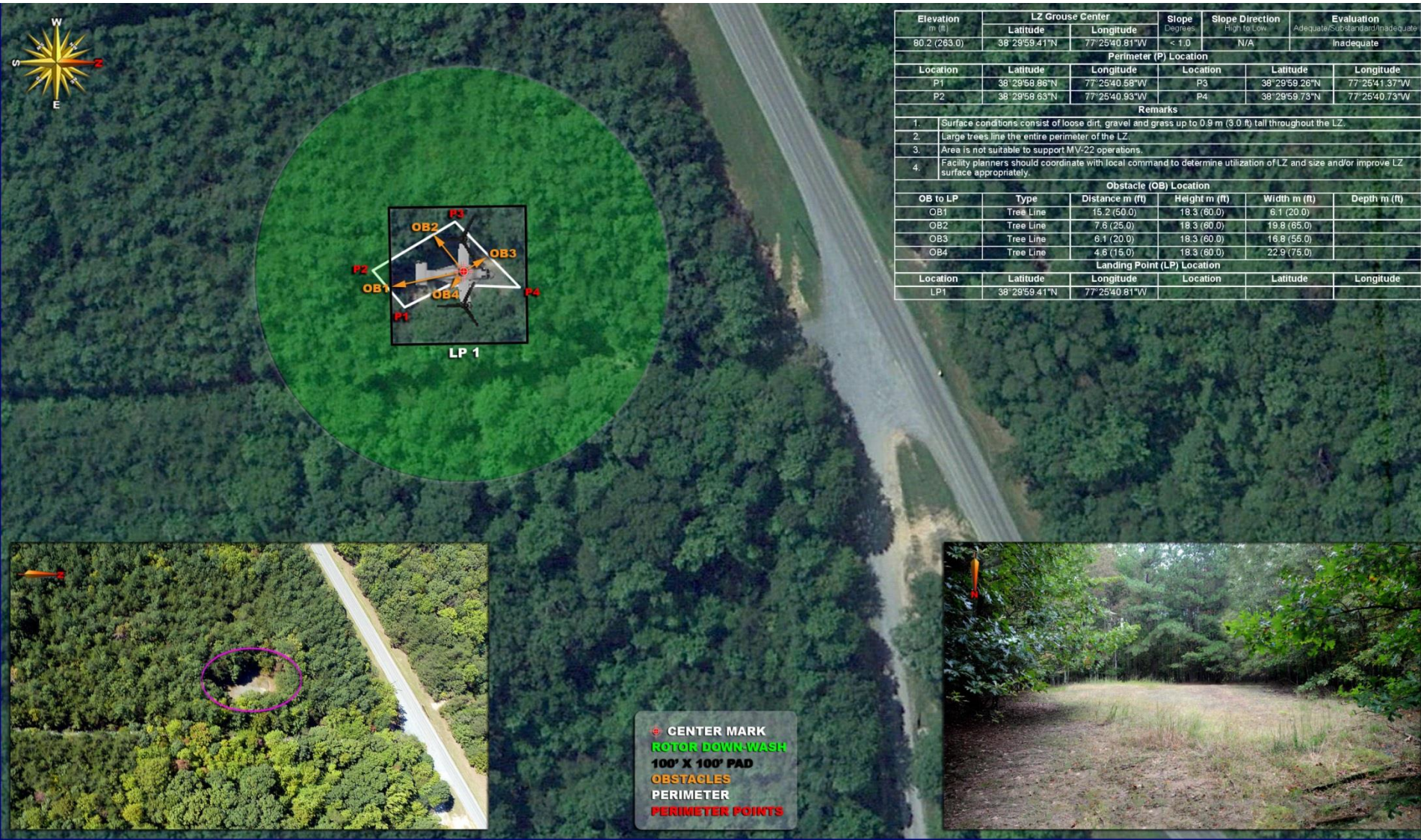


LZ GROUSE

GRID: 775726

TA: 14B



Elevation m (ft)	LZ Grouse Center		Slope Degrees	Slope Direction High to Low	Evaluation Adequate/Standard/Inadequate
	Latitude	Longitude			
80.2 (263.0)	38° 29'59.41"N	77° 25'40.81"W	< 1.0	N/A	Inadequate

Perimeter (P) Location					
Location	Latitude	Longitude	Location	Latitude	Longitude
P1	38° 29'58.86"N	77° 25'40.68"W	P3	38° 29'59.26"N	77° 25'41.37"W
P2	38° 29'58.63"N	77° 25'40.93"W	P4	38° 29'59.73"N	77° 25'40.73"W

Remarks	
1.	Surface conditions consist of loose dirt, gravel and grass up to 0.9 m (3.0 ft) tall throughout the LZ.
2.	Large trees line the entire perimeter of the LZ.
3.	Area is not suitable to support MV-22 operations.
4.	Facility planners should coordinate with local command to determine utilization of LZ and size and/or improve LZ surface appropriately.

Obstacle (OB) Location					
OB to LP	Type	Distance m (ft)	Height m (ft)	Width m (ft)	Depth m (ft)
OB1	Tree Line	15.2 (50.0)	18.3 (60.0)	6.1 (20.0)	
OB2	Tree Line	7.6 (25.0)	18.3 (60.0)	19.8 (65.0)	
OB3	Tree Line	6.1 (20.0)	18.3 (60.0)	16.8 (55.0)	
OB4	Tree Line	4.6 (15.0)	18.3 (60.0)	22.9 (75.0)	

Landing Point (LP) Location					
Location	Latitude	Longitude	Location	Latitude	Longitude
LP1	38° 29'59.41"N	77° 25'40.81"W			

⊕ CENTER MARK
 ROTOR DOWN-WASH
 100' X 100' PAD
 OBSTACLES
 PERIMETER
 PERIMETER POINTS