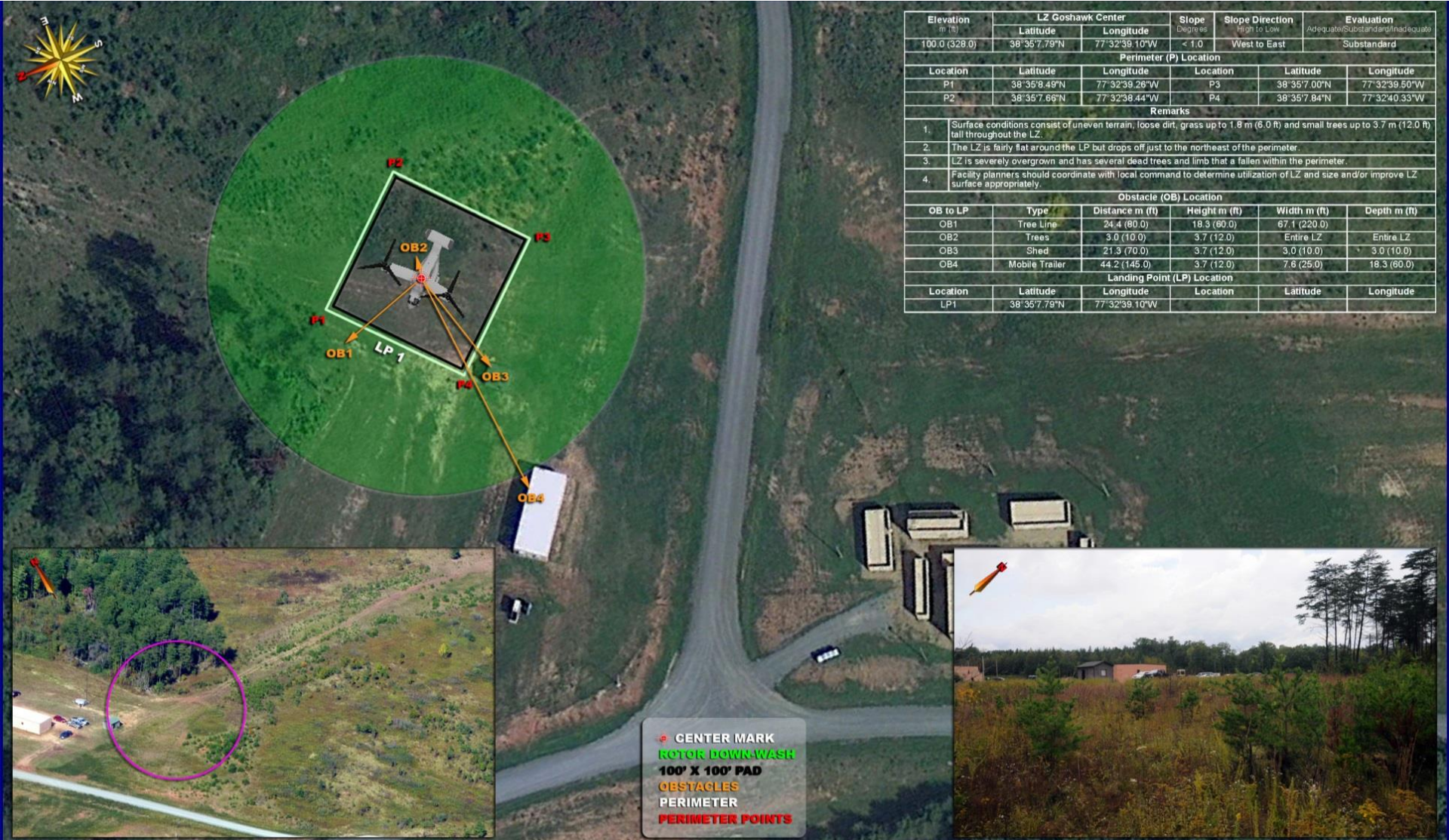


LZ GOSHAWK

GRID: 785740

TA: 15A



Elevation ft (m)	LZ Goshawk Center		Slope Degrees	Slope Direction High to Low	Evaluation Adequate/Substandard/Inadequate
	Latitude	Longitude			
100.0 (328.0)	38°35'7.79"N	77°32'39.10"W	< 1.0	West to East	Substandard
Perimeter (P) Location					
Location	Latitude	Longitude	Location	Latitude	Longitude
P1	38°35'8.49"N	77°32'39.26"W	P3	38°35'7.00"N	77°32'39.50"W
P2	38°35'7.66"N	77°32'38.44"W	P4	38°35'7.84"N	77°32'40.33"W
Remarks					
1.	Surface conditions consist of uneven terrain, loose dirt, grass up to 1.8 m (6.0 ft) and small trees up to 3.7 m (12.0 ft) tall throughout the LZ.				
2.	The LZ is fairly flat around the LP but drops off just to the northeast of the perimeter.				
3.	LZ is severely overgrown and has several dead trees and limb that a fallen within the perimeter.				
4.	Facility planners should coordinate with local command to determine utilization of LZ and size and/or improve LZ surface appropriately.				
Obstacle (OB) Location					
OB to LP	Type	Distance m (ft)	Height m (ft)	Width m (ft)	Depth m (ft)
OB1	Tree Line	24.4 (80.0)	18.3 (60.0)	67.1 (220.0)	
OB2	Trees	3.0 (10.0)	3.7 (12.0)	Entire LZ	Entire LZ
OB3	Shed	21.3 (70.0)	3.7 (12.0)	3.0 (10.0)	3.0 (10.0)
OB4	Mobile Trailer	44.2 (145.0)	3.7 (12.0)	7.6 (25.0)	18.3 (60.0)
Landing Point (LP) Location					
Location	Latitude	Longitude	Location	Latitude	Longitude
LP1	38°35'7.79"N	77°32'39.10"W			