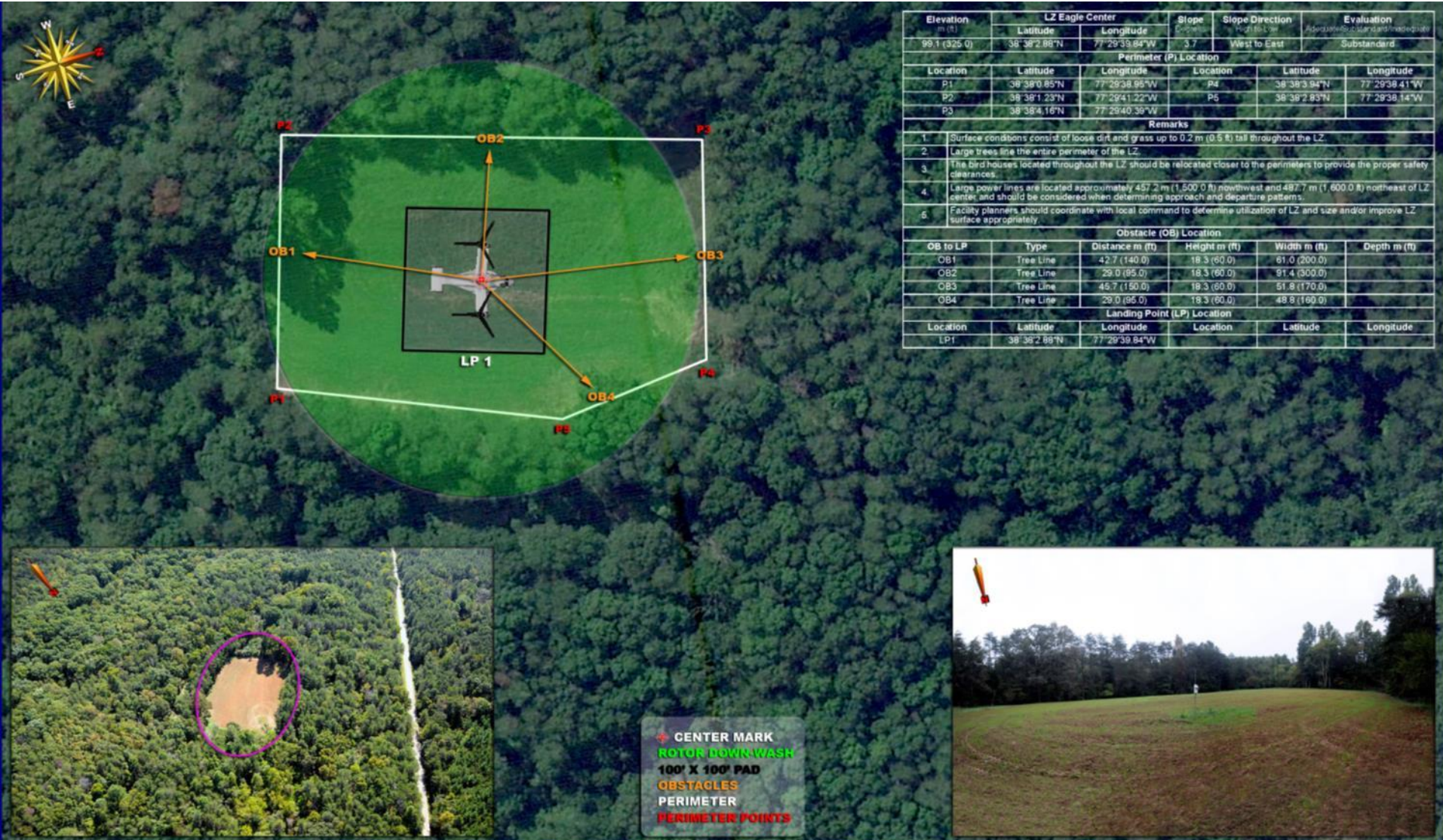


# LZ EAGLE

GRID: 829791

TA: 16B



Elevation m (ft)	LZ Eagle Center		Slope Degrees	Slope Direction Point to Low	Evaluation Adaptability to Use as Landing Area
	Latitude	Longitude			
99.1 (325.0)	38° 36' 2.88" N	77° 29' 39.84" W	3.7	West to East	Substandard
Perimeter (P) Location					
Location	Latitude	Longitude	Location	Latitude	Longitude
P1	38° 38' 0.85" N	77° 29' 38.95" W	P4	38° 38' 3.94" N	77° 29' 38.41" W
P2	38° 38' 1.23" N	77° 29' 41.22" W	P5	38° 38' 7.83" N	77° 29' 38.14" W
P3	38° 38' 4.16" N	77° 29' 40.39" W			
Remarks					
1.	Surface conditions consist of loose dirt and grass up to 0.2 m (0.5 ft) tall throughout the LZ.				
2.	Large trees line the entire perimeter of the LZ.				
3.	The bird houses located throughout the LZ should be relocated closer to the perimeters to provide the proper safety clearances.				
4.	Large power lines are located approximately 457.2 m (1,500.0 ft) northwest and 487.7 m (1,600.0 ft) northeast of LZ center and should be considered when determining approach and departure patterns.				
5.	Facility planners should coordinate with local command to determine utilization of LZ and size and/or improve LZ surface appropriately.				
Obstacle (OB) Location					
OB to LP	Type	Distance m (ft)	Height m (ft)	Width m (ft)	Depth m (ft)
OB1	Tree Line	42.7 (140.0)	18.3 (60.0)	61.0 (200.0)	
OB2	Tree Line	29.0 (95.0)	18.3 (60.0)	91.4 (300.0)	
OB3	Tree Line	45.7 (150.0)	18.3 (60.0)	51.8 (170.0)	
OB4	Tree Line	29.0 (95.0)	18.3 (60.0)	48.8 (160.0)	
Landing Point (LP) Location					
Location	Latitude	Longitude	Location	Latitude	Longitude
LP1	38° 36' 2.88" N	77° 29' 39.84" W			