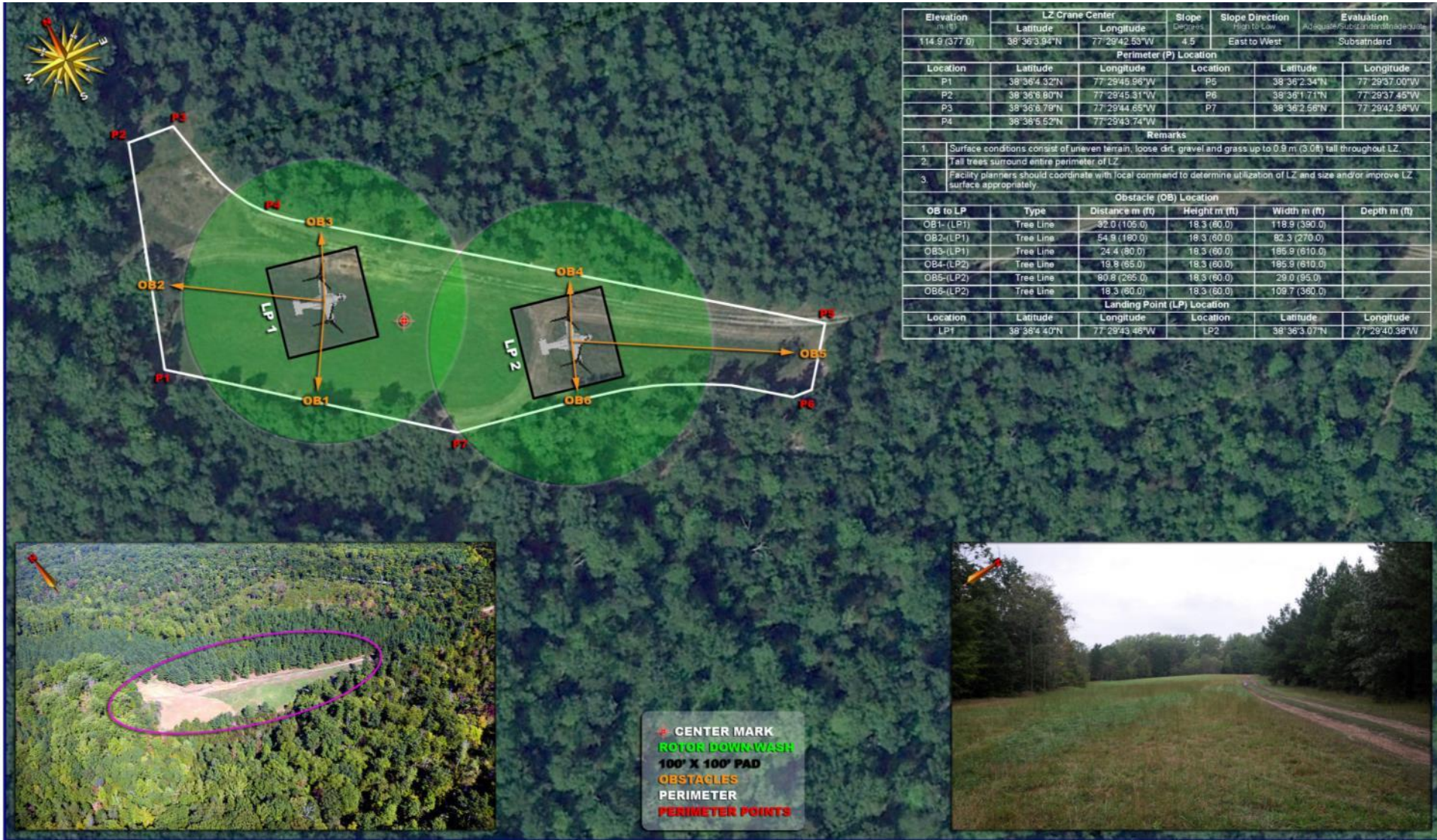


LZ CRANE

GRID: 827755

TA: 16D



Elevation m (ft)	LZ Crane Center		Slope Degrees	Slope Direction High to Low	Evaluation Adequate/Substandard/Inadequate
	Latitude	Longitude			
114.9 (377.0)	38°36'3.94"N	77°29'42.53"W	4.5	East to West	Substandard
Perimeter (P) Location					
Location	Latitude	Longitude	Location	Latitude	Longitude
P1	38°36'4.32"N	77°29'45.96"W	P5	38°36'2.34"N	77°29'37.00"W
P2	38°36'6.00"N	77°29'45.31"W	P6	38°36'1.71"N	77°29'37.45"W
P3	38°36'6.78"N	77°29'44.65"W	P7	38°36'2.56"N	77°29'42.36"W
P4	38°36'5.62"N	77°29'43.74"W			
Remarks					
1.	Surface conditions consist of uneven terrain, loose dirt, gravel and grass up to 0.9 m (3.0 ft) tall throughout LZ.				
2.	Tall trees surround entire perimeter of LZ.				
3.	Facility planners should coordinate with local command to determine utilization of LZ, and size and/or improve LZ surface appropriately.				
Obstacle (OB) Location					
OB to LP	Type	Distance m (ft)	Height m (ft)	Width m (ft)	Depth m (ft)
OB1-(LP1)	Tree Line	32.0 (105.0)	18.3 (60.0)	118.9 (390.0)	
OB2-(LP1)	Tree Line	54.9 (180.0)	18.3 (60.0)	82.3 (270.0)	
OB3-(LP1)	Tree Line	24.4 (80.0)	18.3 (60.0)	185.9 (610.0)	
OB4-(LP2)	Tree Line	19.8 (65.0)	18.3 (60.0)	195.9 (610.0)	
OB5-(LP2)	Tree Line	80.8 (265.0)	18.3 (60.0)	29.0 (95.0)	
OB6-(LP2)	Tree Line	18.3 (60.0)	18.3 (60.0)	109.7 (360.0)	
Landing Point (LP) Location					
Location	Latitude	Longitude	Location	Latitude	Longitude
LP1	38°36'4.40"N	77°29'43.46"W	LP2	38°36'3.07"N	77°29'40.38"W