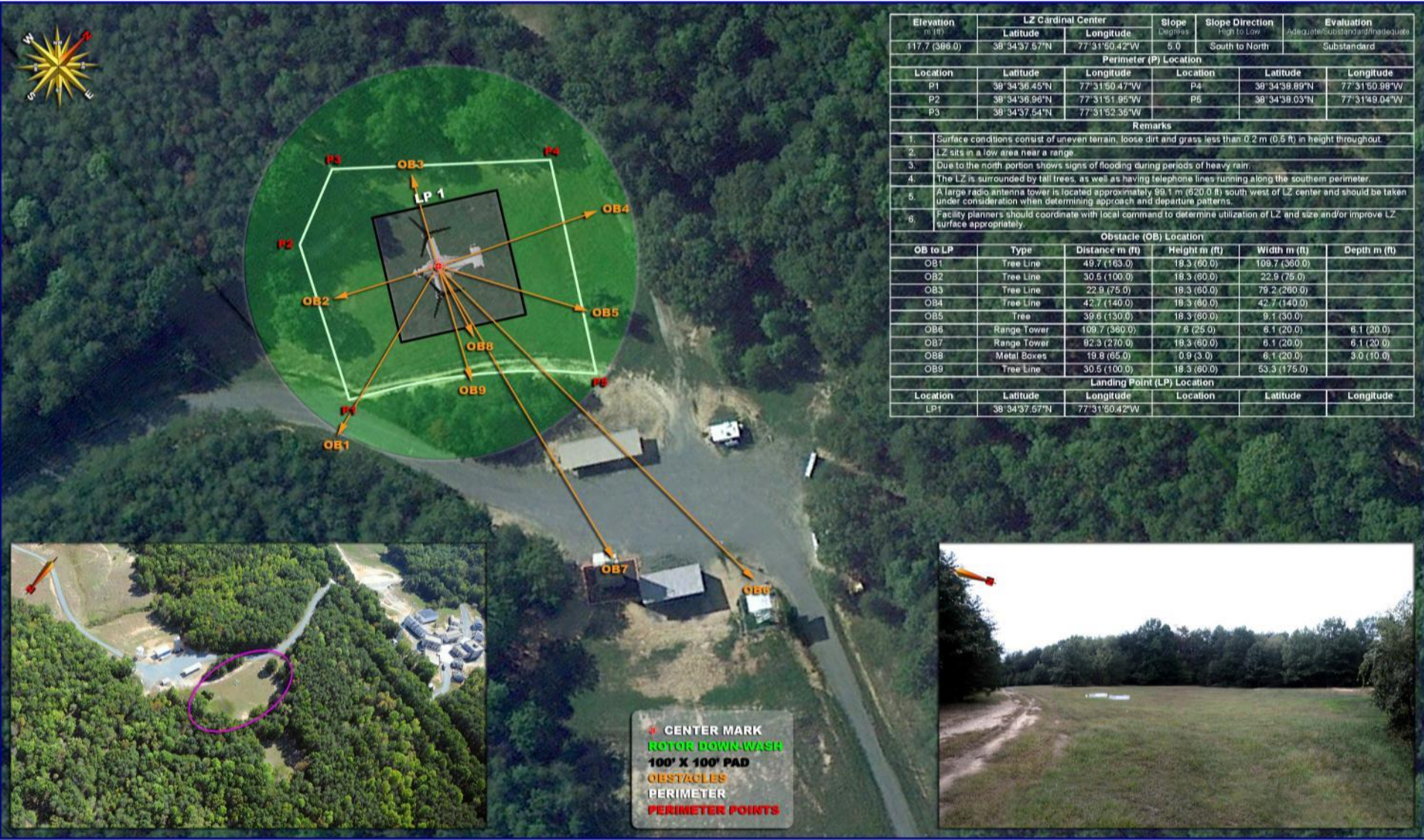


# LZ CARDINAL

GRID: 796729

TA: 15A



Elevation m (ft)	LZ Cardinal Center		Slope Degrees	Slope Direction High to Low	Evaluation Adequate, Substandard and Inadequate
	Latitude	Longitude			
117.7 (389.0)	38° 34' 37.57" N	77° 31' 50.42" W	5.0	South to North	Substandard
Perimeter (P) Location					
Location	Latitude	Longitude	Location	Latitude	Longitude
P1	38° 34' 36.45" N	77° 31' 50.47" W	P4	38° 34' 38.89" N	77° 31' 50.98" W
P2	38° 34' 36.98" N	77° 31' 51.95" W	P5	38° 34' 38.03" N	77° 31' 49.04" W
P3	38° 34' 37.54" N	77° 31' 52.35" W			
Remarks					
1.	Surface conditions consist of uneven terrain, loose dirt and grass less than 0.2 m (0.5 ft) in height throughout.				
2.	LZ sits in a low area near a range.				
3.	Due to the north portion shows signs of flooding during periods of heavy rain.				
4.	The LZ is surrounded by tall trees, as well as having telephone lines running along the southern perimeter.				
5.	A large radio antenna tower is located approximately 99.1 m (325.0 ft) south west of LZ center and should be taken under consideration when determining approach and departure patterns.				
6.	Facility planners should coordinate with local command to determine utilization of LZ, and size and/or improve LZ surface appropriately.				
Obstacle (OB) Location					
OB to LP	Type	Distance m (ft)	Height m (ft)	Width m (ft)	Depth m (ft)
OB1	Tree Line	49.7 (163.0)	18.3 (60.0)	109.7 (360.0)	
OB2	Tree Line	30.5 (100.0)	18.3 (60.0)	22.9 (75.0)	
OB3	Tree Line	22.9 (75.0)	18.3 (60.0)	78.2 (260.0)	
OB4	Tree Line	42.7 (140.0)	18.3 (60.0)	42.7 (140.0)	
OB5	Tree	39.6 (130.0)	18.3 (60.0)	9.1 (30.0)	
OB6	Range Tower	109.7 (360.0)	7.5 (25.0)	6.1 (20.0)	6.1 (20.0)
OB7	Range Tower	82.3 (270.0)	18.3 (60.0)	6.1 (20.0)	6.1 (20.0)
OB8	Metal Boxes	19.8 (65.0)	0.9 (3.0)	6.1 (20.0)	3.0 (10.0)
OB9	Tree Line	30.5 (100.0)	18.3 (60.0)	53.3 (175.0)	
Landing Point (LP) Location					
Location	Latitude	Longitude	Location	Latitude	Longitude
LP1	38° 34' 37.57" N	77° 31' 50.42" W			

\* CENTER MARK  
 ROTOR DOWN WASH  
 100' X 100' PAD  
 OBSTACLES  
 PERIMETER  
 PERIMETER POINTS